

RESEARCH

Open Access



# The panda-derived *Lactiplantibacillus plantarum* BSG201683 improves LPS-induced intestinal inflammation and epithelial barrier disruption in vitro

Yi Zhou<sup>1,2†</sup>, Ling Duan<sup>3†</sup>, Yan Zeng<sup>1†</sup>, Xu Song<sup>1</sup>, Kangcheng Pan<sup>1</sup>, Lili Niu<sup>4</sup>, Yang Pu<sup>4</sup>, Jiakun Li<sup>2</sup>, Abdul Khaliq<sup>1</sup>, Jing Fang<sup>1</sup>, Bo Jing<sup>1</sup>, Dong Zeng<sup>1</sup>, Bairong Shen<sup>2\*</sup> and Xueqin Ni<sup>1\*</sup>

## Abstract

Captive pandas are suffering from intestinal infection due to intestinal microbiota characterized by a high abundance of *Enterobacteriaceae* induced by long-term captivity. Probiotic supplements showed improvement in intestinal barrier function and inflammation. However, the effects of panda-derived probiotics on the intestinal epithelium and inflammation have not been elucidated. In the present study, lipopolysaccharide (LPS) impaired Caco-2 and RAW264.7 inflammatory models were applied to assess the protection of *Lactiplantibacillus plantarum* BSG201683 (*L. plantarum* G83) on barrier disruption and inflammation. The results showed that treatment with *L. plantarum* G83 significantly decreased the paracellular permeability to fluorescein isothiocyanate conjugated dextran (MW 4000, FITC-D4) after LPS induction. Meanwhile, *L. plantarum* G83 alleviated the reduction in tight junction (TJ) proteins and downregulated proinflammatory cytokines caused by LPS in Caco-2 cells. *L. plantarum* G83 also significantly decreased the expression and secretion of pro-inflammatory cytokines in LPS-induced RAW264.7 cells. In addition, the IL-10 increased in both Caco-2 and RAW264.7 cells after *L. plantarum* G83 treatment. The phagocytosis activity of RAW264.7 cells was significantly increased after *L. plantarum* G83 treatment. Toll-like receptor 4/ nuclear factor kappa-B (TLR4/NF- $\kappa$ B) signaling pathways were significantly down-regulated after *L. plantarum* G83 intervention, and the phosphorylation of NF- $\kappa$ B/p65 was consistent with this result. Our findings suggest that *L. plantarum* G83 improves intestinal inflammation and epithelial barrier disruption in vitro.

**Keywords** Probiotic, *Lactobacillus*, Inflammation, Permeability, Tight junction

<sup>†</sup>Yi Zhou, Ling Duan and Yan Zeng contributed equally to this work and share the first authorship.

\*Correspondence:

Bairong Shen  
bairong.shen@scu.edu.cn

Xueqin Ni  
xueqinni@foxmail.com

<sup>1</sup> Animal Microecology Research Center, College of Veterinary Medicine, Sichuan Agricultural University, Chengdu 611130, Sichuan, China

<sup>2</sup> Department of Urology and Institutes for Systems Genetics, Frontiers Science Center for Disease-Related Molecular Network, West China Hospital, Sichuan University, Chengdu 611130, Sichuan, China

<sup>3</sup> Animal Feed Affairs of Sichuan Province, Sichuan Provincial Department of Agriculture and Rural Affairs, Chengdu 610041, Sichuan, China

<sup>4</sup> Chengdu Wildlife Institute, Chengdu Zoo, Chengdu 610081, Sichuan, China



## Background

Dietary intake is an important factor in determining the composition of gut microbiota [1]. For example, studies have shown that Prevotella is increased in abundance in populations consuming a diet rich in plant-based food, while Bacteroides are increased in populations consuming high animal fats and proteins [2]. Consistent with the notion that diet drives the microbial communities, a study using *Cynomolgus macaques* found significant differences in the gut microbiota after 2.5 years of Western- and Mediterranean-type diet consumption [3]. In captive pandas, it has also been shown the environment, and likely the diet, influences the gut microbiota. Pandas in the wild have been shown to have higher levels of *Pseudomonadaceae*. Whereas captive pandas have an expansion of *Enterobacteriaceae* after long-term artificial feeding and antibiotic use [4]. *Enterobacteriaceae* harbors multiple gut pathogens and expansion of this group has been associated with several disease states [5]. The intestinal barrier is employed as a front line against antigens from the intestinal microbiota and dietary food [6]. As a critical participant in the intestinal barrier, TJ proteins are important to maintain epithelial permeability. There are several proteins involved in response to regulate permeability to prevent microbes and antigens from invading the host via paracellular pathway, including Zonula occludens (ZO), Occludin, Tricellulin, and Claudin [7]. Therefore, impaired intestinal permeability is observed during infection or microbiota dysbiosis. It is demonstrated that the abundance of specific bacteria will increase when microbiota dysbiosis is induced by pathogen infection. The intercellular cross-talk between host and gut microbiota will be subsequently changed [8, 9]. Yao [4] demonstrated that the dominant microbiota in captive pandas is *Enterobacteriaceae*, while that of wild pandas is *Pseudomonadaceae*. Regrettably, most of the reported infection cases in captive pandas are induced by bacteria belonging to *Enterobacteriaceae* [10]. It follows that the integrity of intestinal epithelium will be interrupted and increase the permeability by pathogenic bacteria infection in captive giant pandas, which in turn leads to antigen materials entering the intestinal lamina propria. In addition, the epithelium damage induced by undigested bamboo fibers and parasitic infections in giant pandas will also cause intestinal inflammation. Intestinal microbiota plays an important role in maintaining intestinal barrier function.

Probiotics, as a dietary supplement, act on host health in multiple possible ways including intestinal epithelial barrier maintenance and immune modulation [11]. It has been speculated that *Lactobacillus* species beneficially modulate the expression of tight junction protein, thereby promoting barrier integrity. Many studies

suggested that *L. casei* [12], *L. plantarum* [13], or *L. rhamnosus* [14] caused a modest enhancement in the intestinal epithelial TJ proteins. There are many inflammatory pathways involved during the pathogen infection, and it can be triggered by *Lactobacillus* spp. to regulate intestinal permeability, helping TJ proteins assemble and redistribute on the cell surface [15].

In addition, the *Lactobacillus* spp. is known as an active immune mediator through interacting with many antigen-presenting cells (APCs) [16]. There are many pathogen-associated molecular patterns (PAMPs) in intestinal content that regulate intestinal immunity by interacting with pattern recognition receptors (PRRs), such as Toll-like receptors [17, 18]. Many studies demonstrated that the *Lactobacillus* spp. regulates the immune response by triggering off the TLR2 relative pathways to boost or inhibit pro-inflammatory cytokine release [18–20]. Although *Lactobacillus* can't directly activate TLR4, however, it can indirectly participate in the regulation of TLR4 by affecting the intestinal microbiota [21]. *Lactobacillus* spp. can recruit myeloid differentiation factor 88 (MyD88) through TLR signal transduction and the phosphorylated IRAK will interact with TRAF6 to transmit downstream signals, which in turn induces inflammatory cytokines production (Interleukin-1 $\beta$  (IL-1 $\beta$ ), IL-6, IL-8, IL-12, INF- $\gamma$ , and TNF- $\alpha$ ) and chemokines [22, 23].

In our previous study, we demonstrated that *L. plantarum* G83 isolated from the giant panda feces showed an effective probiotic profile *in vitro* and *in vivo* studies. However, the regulation of epithelial barrier function and inflammatory response by *L. plantarum* G83 is still unexplored. To address this concern, the LPS-impaired Caco-2 and RAW264.7 inflammatory models were applied to assess the protection of *L. plantarum* G83 on LPS-induced barrier disruption and inflammation.

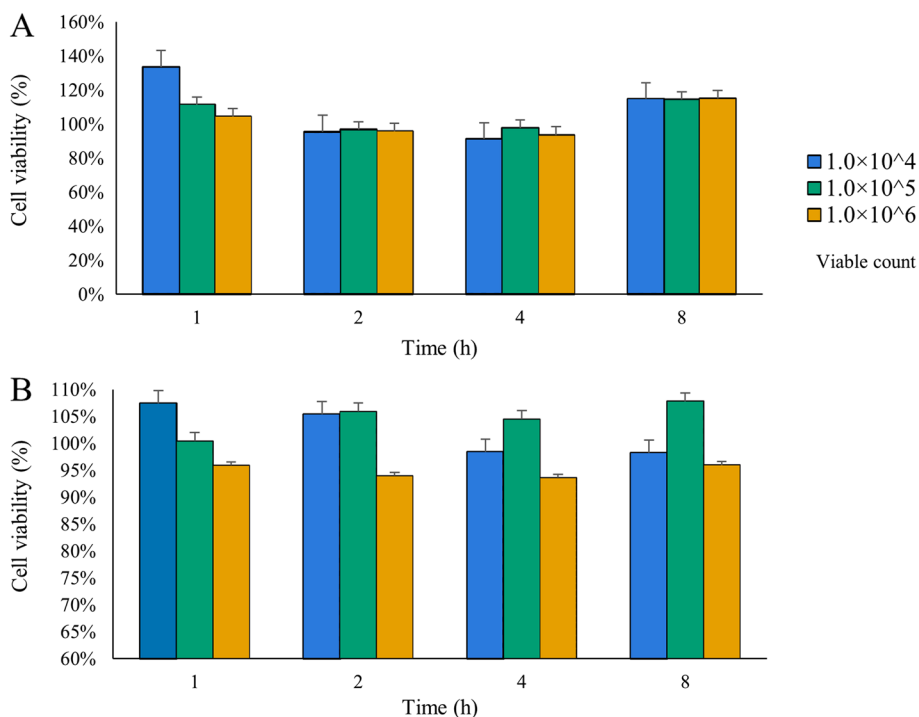
## Results

### Effects of *L. plantarum* G83 on cell viability

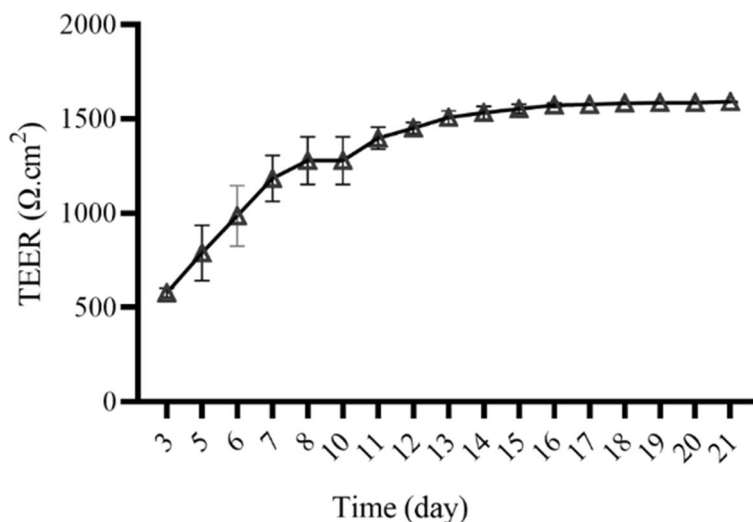
RAW264.7 and Caco-2 cells were co-cultured with different viable counts of *L. plantarum* G83 at 1:1 ( $1.0 \times 10^4$  CFU), 1:10 ( $1.0 \times 10^5$  CFU) and 1:100 ( $1.0 \times 10^6$  CFU) for 1, 2, 4 and 8 h, respectively. The results showed that no significant cell damage was observed under microscope, and the cell viability ratio was greater than 95% in all treatment groups. It is indicated that *L. plantarum* G83 had no significant cytotoxicity to Raw264.7 or Caco-2 cells (Fig. 1).

### Validation of Caco-2 cell monolayer

As shown in Fig. 2, TEER increased rapidly from day 3 to day 7, and it slowed down in the following two weeks. The TEER had very little change from day 17 to day 21.



**Fig. 1** Effects of different concentrations of *L. plantarum* G83 on the viability of Caco-2 (A) and RAW264.7 (B) cells in different treatment time



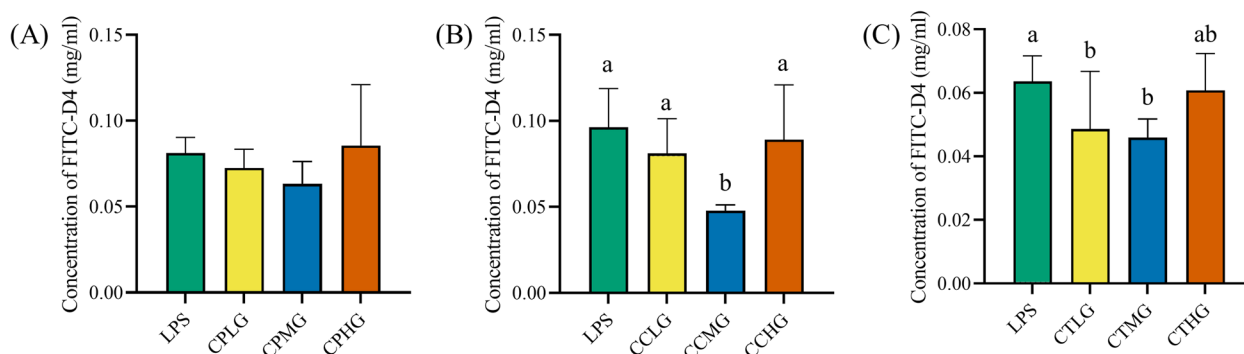
**Fig. 2** Trans epithelial electrical resistance (TEER) changes over time

Thus, the Caco-2 cell monolayer was successfully formed on day 21.

***L. plantarum* G83 decreases paracellular permeability in LPS-impaired Caco-2 cell**

Caco-2 cell monolayer was used to investigate the effect of *L. plantarum* G83 on intercellular transport. The monolayer cell model was successfully generated on the

transwell system on day 21. There was a lower FITC-D4 fluorescence intensity observed in the CCMG group compared with low and high co-culture group. Likewise, CTLG and CTMG groups showed a lower fluorescence intensity compared with other groups among the post-treatment groups. However, we didn't see any difference among the pre-treatment groups (Fig. 3). It indicated that appropriate counts of *L. plantarum* was



**Fig. 3** Effects of different treatments of *L. plantarum* G83 on permeability LPS-induced Caco-2 cell monolayer. The permeability of Caco-2 cell monolayer was determined by transmittance of FITC-D4. Results of pre-treatment groups (A), co-culture groups (B) and post-treatment groups (C) are shown as mean  $\pm$  SD. Data are analyzed with one-way ANOVA (Tukey's test). Different letters mean  $p < 0.05$ , same letter means  $p > 0.05$

associated with enhanced permeability in Caco-2 cell monolayer.

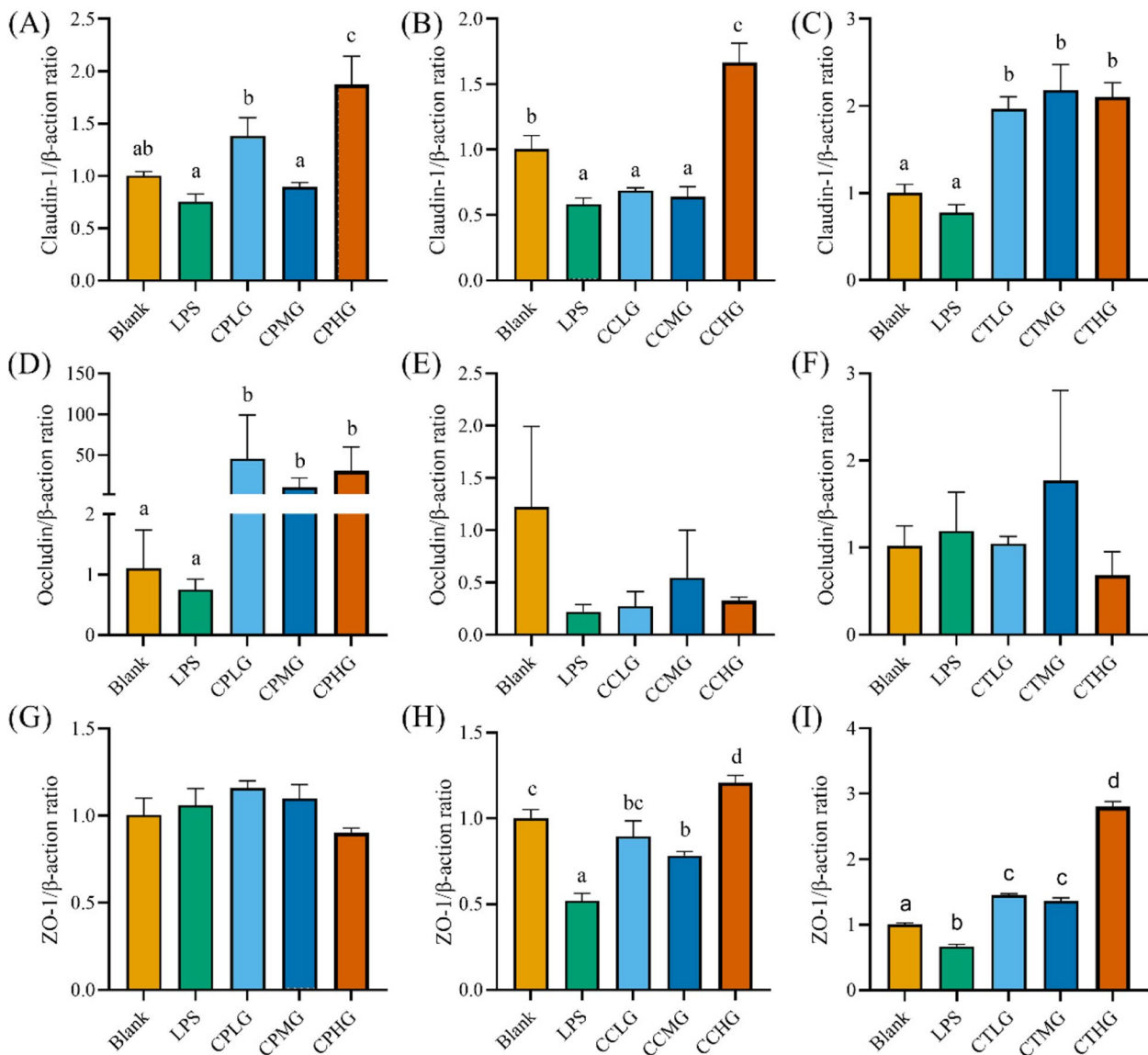
#### ***L. plantarum* G83 promotes intercellular junctions in LPS-impaired Caco-2 cell**

To confirm the beneficial effect of *L. plantarum* G83 on TJ proteins of Caco-2 cell, RT-qPCR and western blot were performed to analyze the Claudin-1, Occludin, and ZO-1 after different viable counts of *L. plantarum* G83 treatment. The Claudin-1 mRNA was up-regulated in the CPLG and CPMG groups. Furthermore, only the CCHG group showed a higher expression level of Claudin-1 gene in co-culture treatment groups. However, all three treatment groups showed a capability to improve the Claudin-1 gene expression compared with that in the LPS treatment group (Fig. 4A-C). The Occludin mRNA was highly improved in all pre-treatment groups, however, there was no significant difference observed in co-culture and post-treatment groups (Fig. 4D-F). Besides, CPLG and CPHG groups had a light promotion effect on the ZO-1 gene expression. In addition, co-culture and post-treatment groups can increase the ZO-1 mRNA expression level (Fig. 4G-I). The western blot results of TJ proteins were consistent with the gene expression result. As shown in Fig. 5, there was no difference in the protein level of Claudin-1 in the pre-treatment group. No difference was found in the CCLG and CCMG groups when compared with that of the LPS group. Whereas the high dose of *L. plantarum* G83 significantly reduced the expression of Claudin-1 protein. In the post-treatment groups, low- and medium-dose treatment groups increased the Claudin-1 protein expression, but the high-dose group showed the opposite result. Meanwhile, the *L. plantarum* G83 showed

a tendency to promote ZO-1 protein expression in the pre-treatment and co-culture groups, but there was no significant difference. Furthermore, CTMG and CTHG groups showed a significant effect on enhancing ZO-1 protein expression. Besides, the expression of Occludin protein in the CPLG and CPMG groups was significantly increased, while that of the CPHG group was slightly decreased. Meanwhile, the Occludin protein only showed an increasing trend in medium dose treatments of co-culture and post-treatment group, other treatments had no difference compared with the LPS group (Fig. 5).

#### ***L. plantarum* G83 reduces inflammatory cytokine release in LPS-induced RAW264.7 and Caco-2 cell**

To explore whether the *L. plantarum* G83 could alleviate inflammatory response by LPS in RAW264.7 cells, ELISA was performed to determine inflammatory cytokines in the cell culture supernatant. Results showed that massive inflammatory cytokines were released into the supernatant after LPS stimulation. RPMG and RPHG treatment groups showed a capability to inhibit LPS-induced NO release. Also, *L. plantarum* G83 pre-treated groups showed a tendency to reduce the TNF- $\alpha$ , IL-6, and IL-10 in the supernatant (Figs. 6 and 7). Meanwhile, RCMG and RCHG co-culture treatment groups effectively inhibited the secretion of NO and TNF- $\alpha$  (Fig. 6), however, IL-6 was only decreased in the RCMG group. We also get the same decreased tendency of the TNF- $\alpha$  and IL-6 in the RTMG and RTHG groups, but NO concentration was only decreased in the RTHG group. As an anti-inflammatory cytokine, IL-10 significantly increased after LPS stimulation, which may be the result of negative feedback regulation of inflammatory response (Fig. 7).



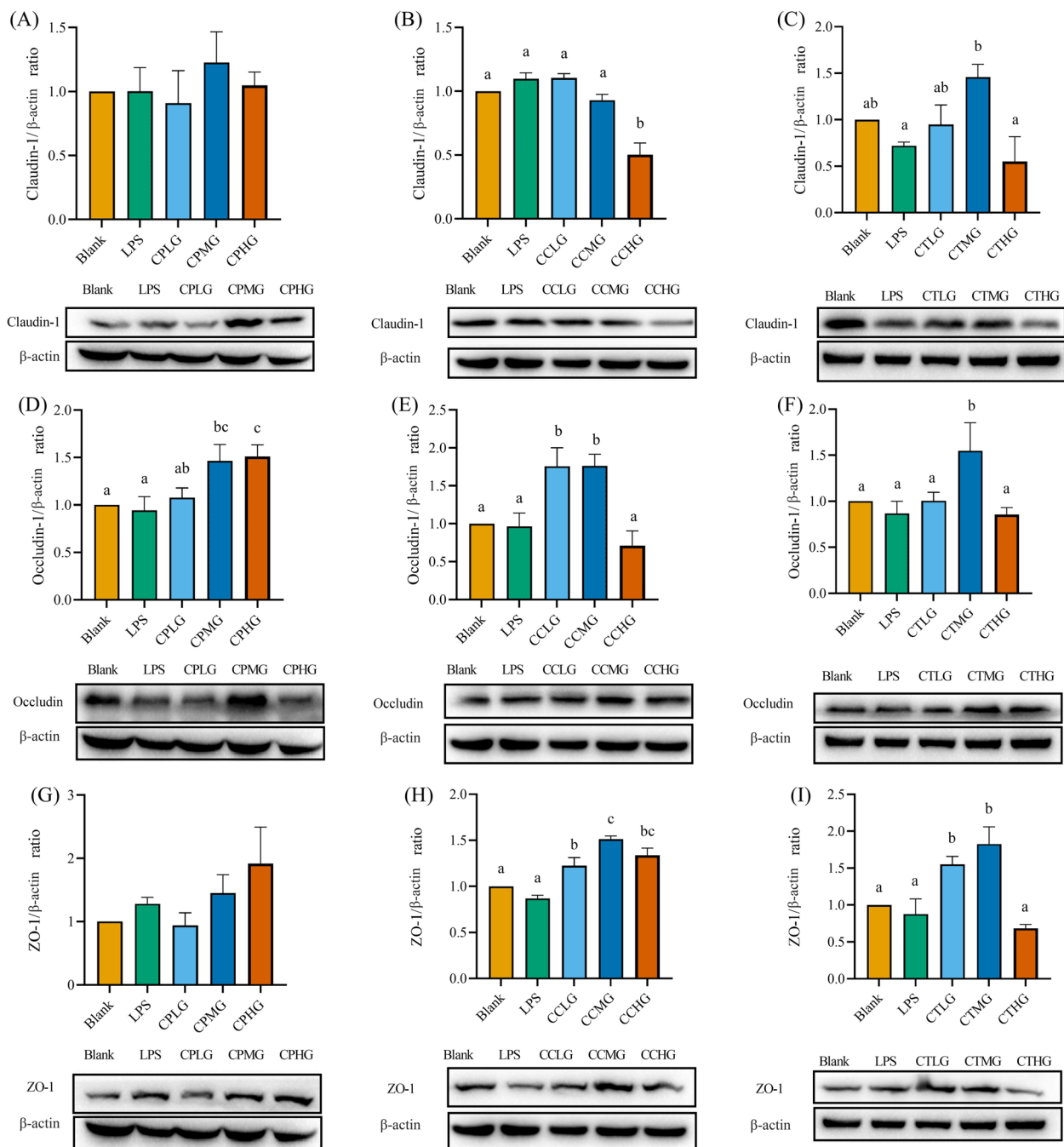
**Fig. 4** Effects of different treatments of *L. plantarum* G83 on tight junction protein mRNA expression in LPS-impaired Caco-2 cells. Claudin-1 (A-C), occludin (D-F) and ZO-1 (G-I) gene expression levels were determined by qRT-PCR after Caco-2 pre-treated (A, D, G), co-cultured (B, E, H) and post-treated (C, F, I) with different viable count of *L. plantarum*. All data are shown as mean ± SD. Data are analyzed with one-way ANOVA (Tukey's test). Different letters mean  $p < 0.05$ , same letter means  $p > 0.05$

We are wondering whether the inflammatory response was improved by *L. plantarum* G83 in LPS-impaired Caco-2 cells. As shown in the figure, the TNF- $\alpha$  was significantly decreased in the supernatant of the CCLG, CCMG, and CTMG treatment groups, while other treatment groups had no difference compared with the LPS group (Fig. 8). It indicated that the *L. plantarum* G83 showed a capability to reduce the inflammatory response in the co-culture and post-treated group. Meanwhile, the

concentration of IL-10 in the CTMG group was significantly improved (Fig. 8).

***L. plantarum* G83 improves the phagocytosis function of RAW264.7**

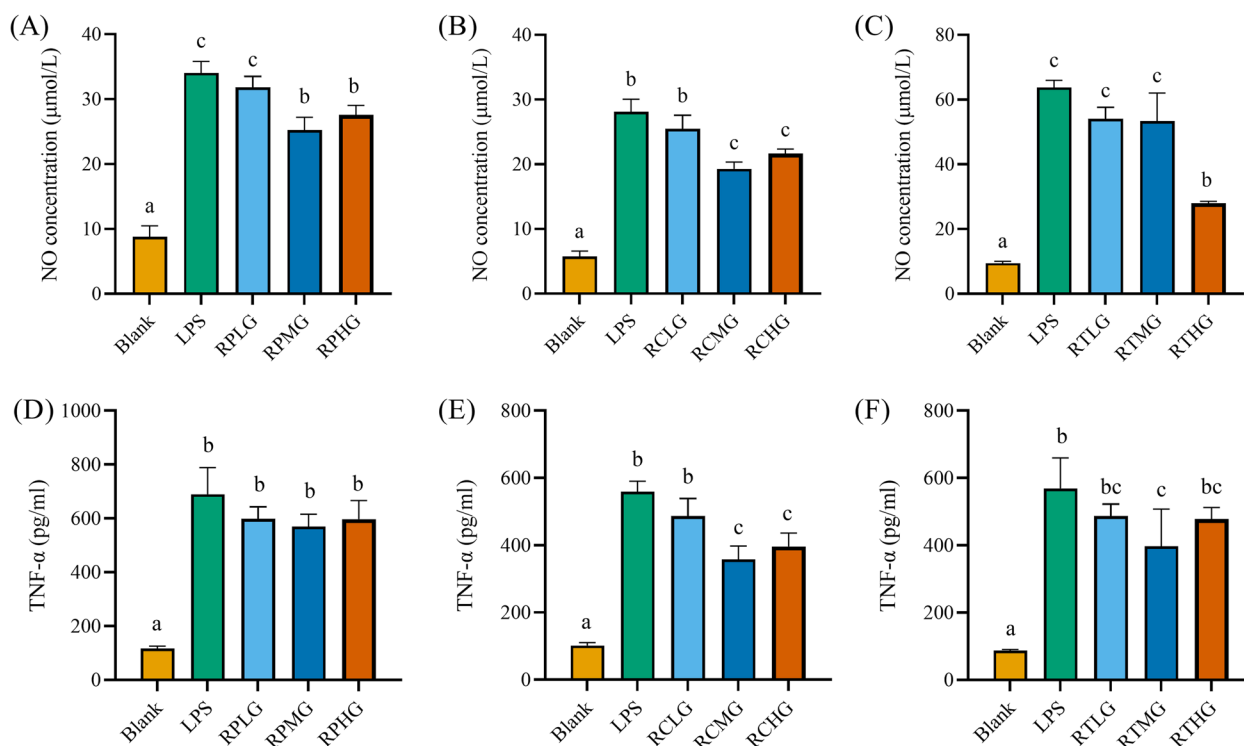
The phagocytosis activity of RAW264.7 cells was significantly increased in low- and high-dose pre-treatment groups compared with that of the Blank group ( $p < 0.05$ ) (Fig. 9). In comparison, medium-dose and



**Fig. 5** Effects of different treatments of *L. plantarum* G83 on Tight junction protein mRNA expression in LPS-impaired Caco-2 cell. Claudin-1 (A-C), occludin-1 (D-F) and ZO-1 (G-I) protein expression level were determined by western blot after Caco-2 pre-treated (A, D, G), co-cultured (B, E, H) and post-treated (C, F, I) with different viable count of *L. plantarum* G83. The same batch of different treatment samples ran on the same gel and blots closest to the mean abundance cropped from different gels were presented in the figure. All data are shown as mean ± SD. Data are analyzed with one-way ANOVA (Tukey’s test). Different letters mean  $p < 0.05$ , same letter means  $p > 0.05$

high-dose co-culture groups showed higher phagocytic activity compared to the Blank group ( $p < 0.05$ ). The same result was observed in the medium-dose and high-dose post-treatment groups ( $p < 0.05$ ),

but there was no difference compared with that of the LPS group ( $p > 0.05$ ). *L. plantarum* G83 showed promoting effect on the phagocytosis activity of macrophages.



**Fig. 6** Effects of different treatments of *L. plantarum* G83 on the secretion of NO and TNF- $\alpha$  in LPS-induced RAW264.7 cell. NO (A-C) and TNF- $\alpha$  (D-F) in the RAW264.7 cell culture supernatant were determined by ELISA after RAW264.7 pre-treated (A and D), co-cultured (B and E) and post-treated (C and F) with different viable count of *L. plantarum* G83. All data are shown as mean  $\pm$  SD. Data are analyzed with one-way ANOVA (Tukey's test). Different letters mean  $p < 0.05$ , same letter means  $p > 0.05$

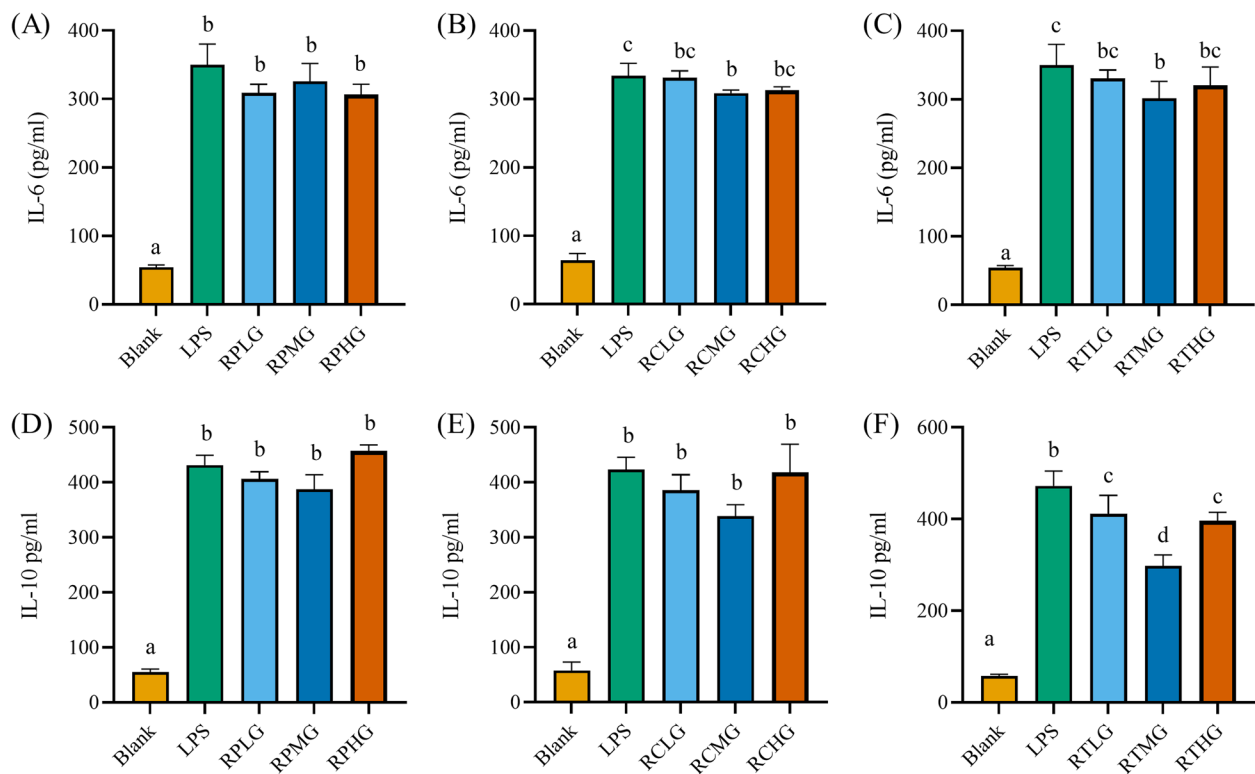
### *L. plantarum* G83 reduces the inflammatory response in LPS-induced RAW264.7 by TLR4/NF- $\kappa$ B pathway

We further investigated inflammation-associated genes on the transcriptional level. Results showed that IL-6 gene was significantly decreased in all prevented treatment groups, while IL-10 gene was significantly promoted. The expression level of TLR4, NF- $\kappa$ B, MyD88, and iKK $\beta$  gene was also down-regulated in all three *L. plantarum* G83 pre-treatment groups (Fig. 10). In co-culture groups (Fig. 11), the expression of TNF- $\alpha$  was significantly decreased in the RCMG and RCHG groups. Meanwhile, IL-1 $\beta$  gene was promoted by the RCHG treatment group, and IL-10 gene showed a higher expression level in the RCLG treatment group. The TLR4 and NF- $\kappa$ B genes in all co-culture groups showed a lower expression level compared to that of the LPS treatment group. In addition, MyD88 and iKK $\beta$  genes also showed the same change trend. In *L. plantarum* G83 post-treatment groups (Fig. 12), the *L. plantarum* G83 showed a capability to inhibit the IL-1 $\beta$ , TNF- $\alpha$ , and IL-6 gene expression. However, the IL-10 gene was promoted in all *L. plantarum* G83 treatment groups. Consistent with the observation above, the TLR4, NF- $\kappa$ B, MyD88, and iKK $\beta$  genes were down-regulated by *L. plantarum* G83 in the treatment groups. Western blot results indicated

that the phosphorylation of NF- $\kappa$ B/p65 was significantly decreased in the medium dose of the co-culture and treatment group (Fig. 13).

### Discussion

*Lactobacillus* spp. is an important indigenous bacterium in intestinal microbiota as well as one of the most widely used probiotics supplementary [24, 25]. It can initial non-immune and immune response to pathogen invasion and inflammation response in gastrointestinal tract [26, 27]. *Lactobacillus* spp. has been shown to decrease epithelial permeability through interaction with epithelial barrier. *Lactobacillus* spp. has been previously shown to influence the expression and localization of tight junction proteins [15, 28, 29]. Moreover, changes in the permeability of epithelial cells are also accompanied by an inflammatory response. Gratifyingly, there are various components on the surface of *Lactobacillus* spp., such as lipoteichoic acid (TLA), peptidoglycan, and cell surface protein (S-layer protein) [30, 31]. These components act as ligands to interact with PRRs on macrophages, dendritic cells [32], and epithelial cells [15] by triggering immune signal transduction. After being recognized by the receptors, ligands can activate immune signal pathways by producing



**Fig. 7** Effects of different treatments of *L. plantarum* G83 on the secretion of IL-6 and IL-10 in LPS-induced RAW264.7 cell. IL-6 (A-C) and IL-10 (D-F) in the cell culture supernatant were determined by ELISA after RAW264.7 pre-treated (A and D), co-cultured (B and E) and post-treated (C and F) with different viable count of *L. plantarum* G83. All data are shown as mean  $\pm$  SD. Data are analyzed with one-way ANOVA (Tukey's test). Different letters mean  $p < 0.05$ , same letter means  $p > 0.05$

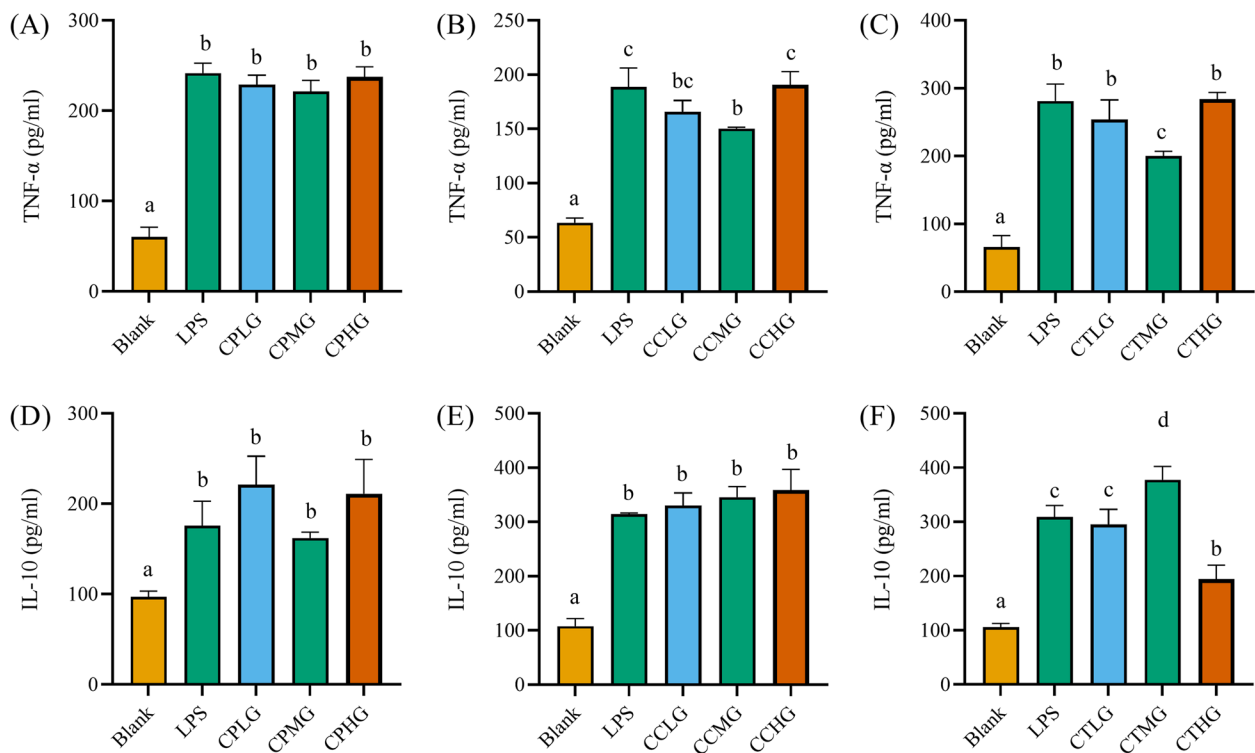
cytokines and chemokines to interact with the immune system. In the present study, we demonstrated that *L. plantarum* G83 is not toxic to Caco-2 and RAW264.7 cells, and it showed an ability to increase the integrity of epithelial barrier in LPS-impaired Caco-2 and reduce pro-inflammatory response in RAW264.7 induced by LPS.

The physical barrier function of intestine is the first barrier for host against foreign materials invasion. Maintaining intercellular junction integrity is the prerequisite for exerting its barrier function [33]. Tight junction proteins are serviced as a gatekeeper for the paracellular pathway to keep intercellular junction integrity. As a gatekeeper between cells, TJs are threatened by pathogenic bacteria and proinflammatory mediators resulting in the development of inflammation and disease [34]. Thus, macromolecular substances from intestinal lumina can easily enter the host through the paracellular pathway when epithelial cell permeability is challenged by inflammation. In our study, the expression of Claudin-1, Occludin, and ZO-1 protein was decreased in Caco-2 monolayer cells after the LPS challenge. While the western blot and qRT-PCR results showed that ZO-1 and Occludin-1 were enhanced in medium dose of *L. plantarum* G83 co-culture and

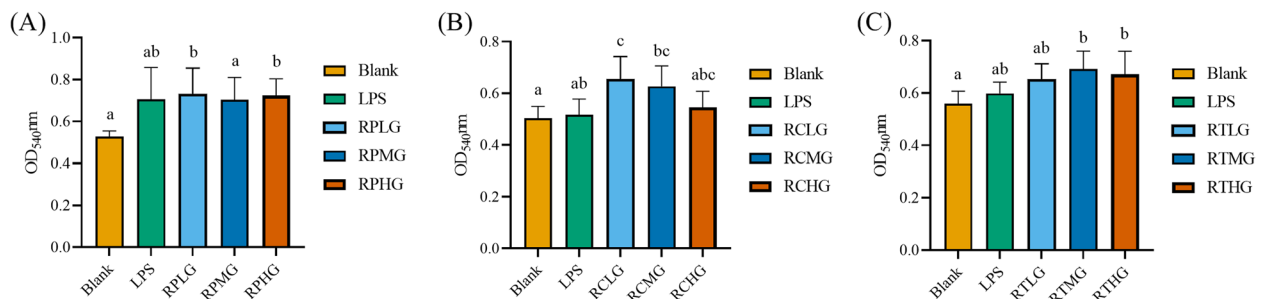
post-treatment group. Resta-Lenert reported that *L. acidophilus* ATCC4356 enhanced expression of ZO-1 and Occludin in HT-29 and Caco-2 monolayer cells models to reduce epithelial dysfunction caused by enteroinvasive *Escherichia coli* 029: NM [35, 36]. *L. rhamnosus* MTCC-5897 was demonstrated to compete with ETEC for binding sites on the surface of Caco-2, and restore ZO-1, Claudin-1, Occludin and Cingulin damage destroyed by ETEC [37]. Lower FITC-D4 fluorescence intensity in the lower compartment of the transwell plate in our result also concluded that the paracellular permeability was improved by *L. plantarum* G83. Many studies have shown that *Lactobacillus* spp. could enhance the paracellular permeability in LPS- or pathogen-impaired Caco-2 monolayer determined by FITC-D4 [14, 38].

Clayburgh concluded that TNF- $\alpha$  could increase the permeability of intestinal epithelial cells by enhancing the activity of myosin light chain kinase (MLCK) which will destroy intestinal tight connector protein. And the use of TNF- $\alpha$  antagonists can significantly restore intestinal barrier function [39]. Therefore, regulation of TNF- $\alpha$  can not only reduce intestinal inflammation but also restore intestinal barrier function. In this study, the expression of





**Fig. 8** Effects of different treatments of *L. plantarum* G83 on TNF- $\alpha$  and IL-10 in the supernatant of LPS-impaired Caco-2 cells. TNF- $\alpha$  (A-C) and IL-10 (D-F) in the cell culture supernatant were determined by ELISA after Caco-2 pre-treated (A and D), co-cultured (B and E) and post-treated (C and F) with different viable count of *L. plantarum* G83. All data are shown as mean  $\pm$  SD. Data are analyzed with one-way ANOVA (Tukey's test). Different letters mean  $p < 0.05$ , same letter means  $p > 0.05$

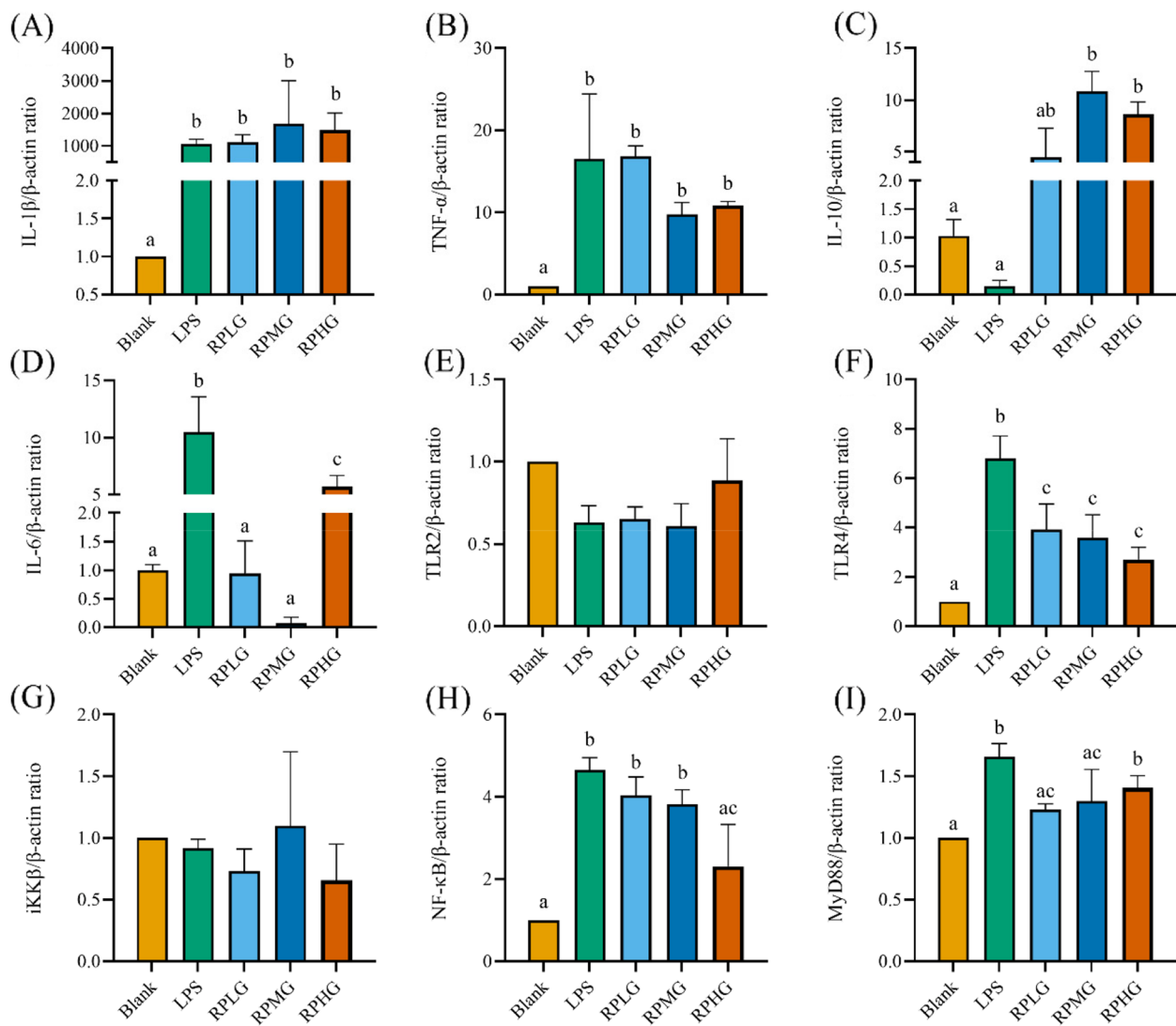


**Fig. 9** Effects of different treatments of *L. plantarum* G83 on the phagocytic activity of RAW264.7. The phagocytic activity of RAW264.7 were determined by 0.05% neutral red staining after pre-treated (A), co-cultured (B) and post-treated (C) with different viable count of *L. plantarum* G83. All data are shown as mean  $\pm$  SD. Data are analyzed with one-way ANOVA (Tukey's test). Different letters mean  $p < 0.05$ , same letter means  $p > 0.05$

TNF- $\alpha$  decreased after *L. plantarum* G83 intervention, and the content of anti-inflammatory cytokine IL-10 also showed an increasing trend. It is continued to prove that *L. plantarum* G83 can strengthen the tight junctions of intestinal epithelial cells. Overall, these data demonstrate that *L. plantarum* G83 could be a good candidate to improve TJs in LPS-impaired Caco-2 cells.

Macrophages are effector cells of the innate immune system that phagocytose bacteria, foreign materials, and

damaged cells. In addition, they can also present antigens to T cells and initiate inflammation by releasing cytokines that activate downstream immune responses [40]. Studies have shown that *Lactobacillus* spp. enhance the phagocytic function of macrophages and the presentation of antigenic substances in vivo and in vitro [41, 42]. Our neutral red phagocytosis testing result indicated that the phagocytic function of macrophages was enhanced after *L. plantarum* G83 treatment. Besides,

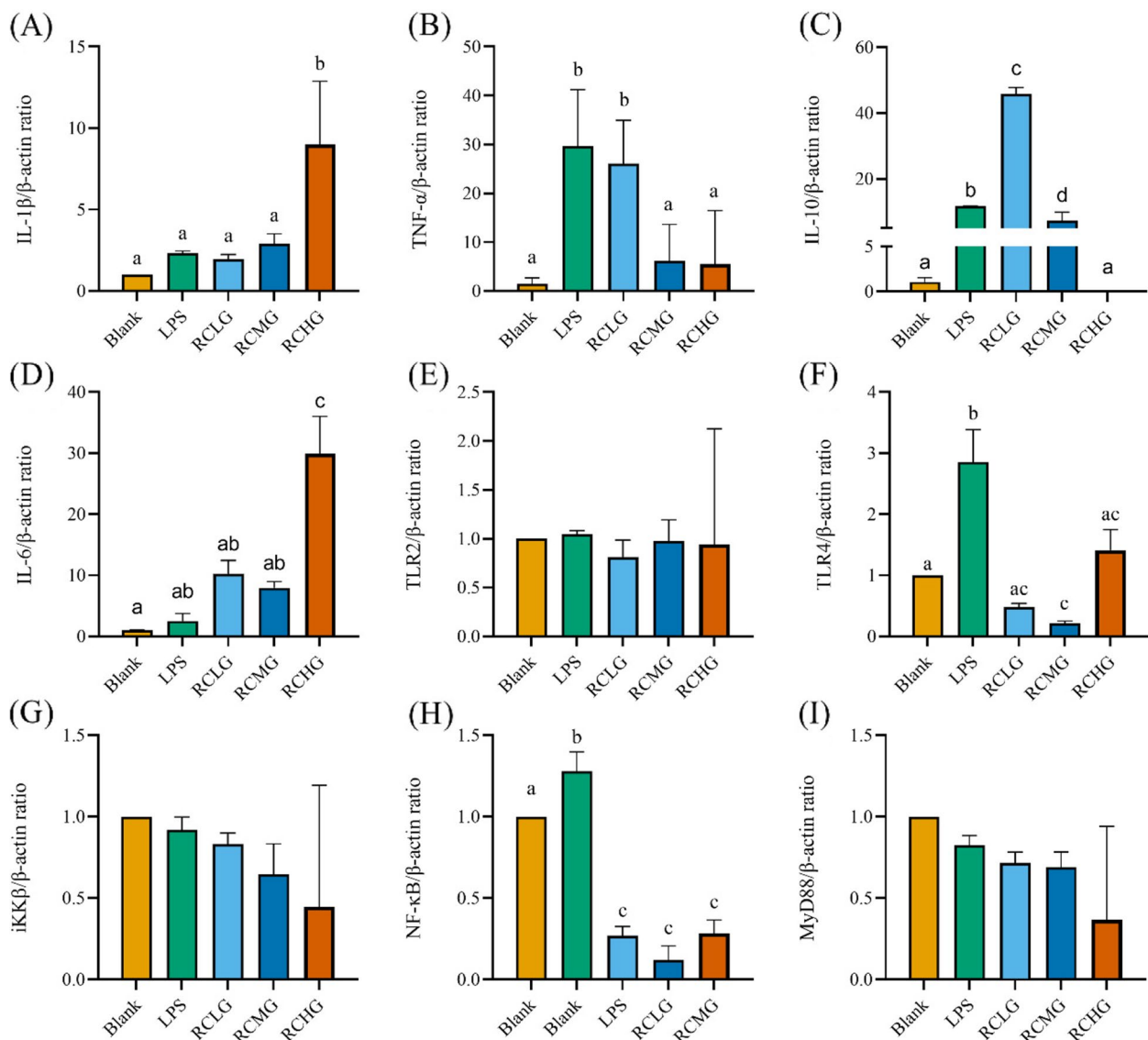


**Fig. 10** Effects of different doses of *L. plantarum* G83 pre-treated with LPS-induced RAW264.7 on the inflammation relative gene expression. Inflammation related cytokines genes (IL-1β (A), TNF-α (B), IL-10 (C), IL-6 (D)) and TLRs/NF-κB related genes (TLR2 (E), TLR4 (F), iKK β (G), NF-κB (H) and MyD88 (I)) were determined by qRT-PCR after RAW264.7 pre-treated with different viable count of *L. plantarum* G83. All data are shown as mean ± SD. Data are analyzed with one-way ANOVA (Tukey's test). Different letters mean  $p < 0.05$ , same letter means  $p > 0.05$

TNF-α is the earliest synthesized cytokine in the inflammatory response, and IL-6 is the main response cytokine [43]. In this study, the inflammation was suppressed with a lower level of TNF-α and IL-6 in the cell culture supernatant of *L. plantarum* G83 co-culture and post-treatment groups. Meanwhile, only a mild anti-inflammatory effect of *L. plantarum* G83 on RAW264.7 cells was observed in the pre-treatment groups. It indicated that the sustained effect of a certain dose is an important condition for *L. plantarum* G83 as a biological agent to participate in the regulation of inflammation [44]. IL-10 is one of the main anti-inflammatory cytokines, which is

crucial for maintaining the balance of inflammation and immunopathological response.

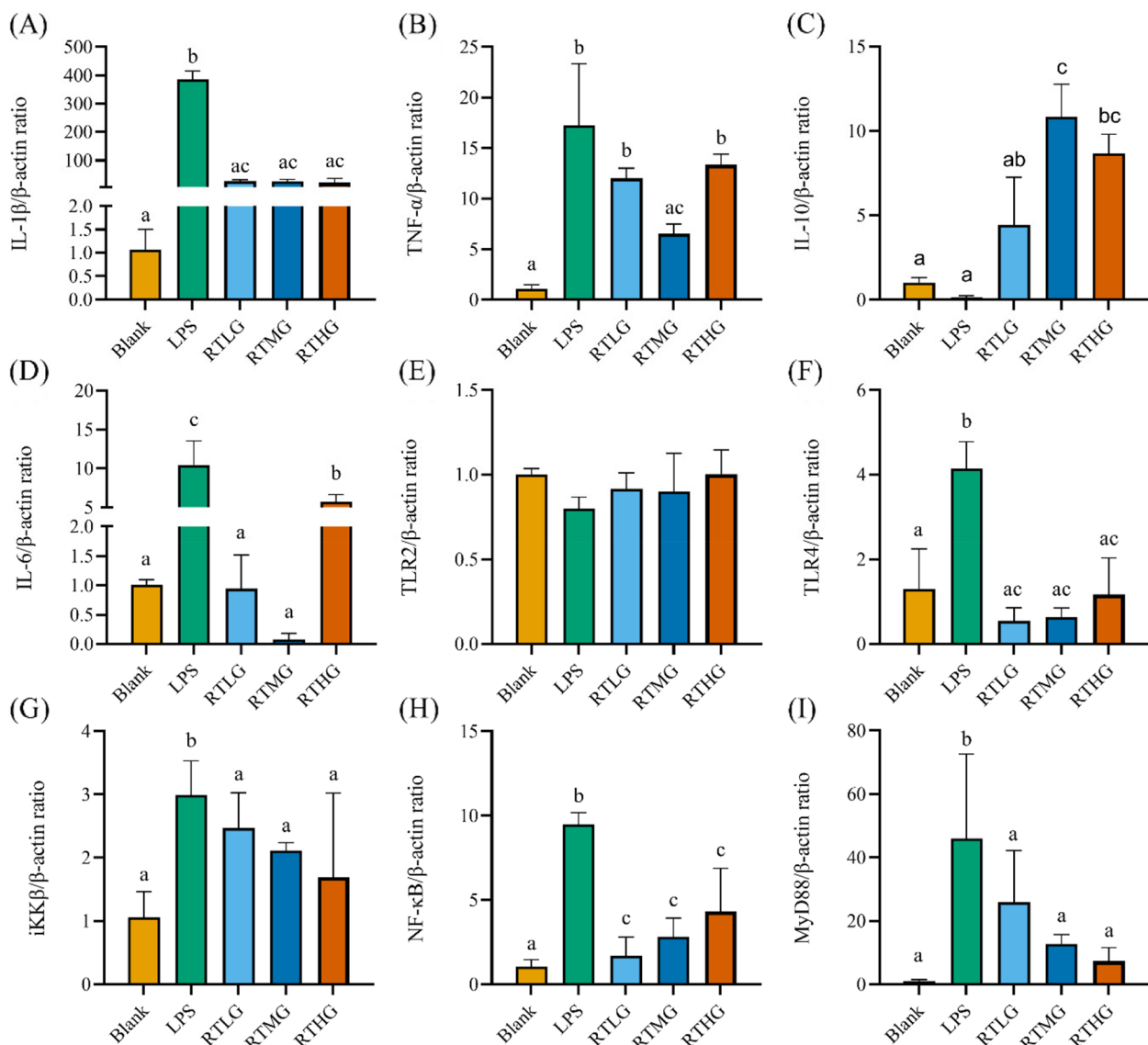
In the present study, the secretion of IL-10 was significantly decreased in the medium dose of *L. plantarum* G83 post-treatment group, and a similar result was observed in the low and high dose of co-culture group. However, the qRT-PCR result of IL-10 gene was opposite to this of the ELISA result, indicating that the IL-10 gene expression level increased after co-cultured or post-treated with *L. plantarum* G83. It is demonstrated that PBMC from patients with allergic inflammation co-cultured with exogenous IL-10 could significantly inhibit the



**Fig. 11** Effects of different doses of *L. plantarum* G83 co-cultured with LPS-induced RAW264.7 on the inflammation relative gene expression. Inflammation related cytokines genes (IL-1 $\beta$  (A), TNF- $\alpha$  (B), IL-10 (C), IL-6 (D)) and TLRs/NF- $\kappa$ B related genes (TLR2 (E), TLR4 (F), iKK  $\beta$  (G), NF- $\kappa$ B (H) and MyD88 (I)) were determined by qRT-PCR after RAW264.7 co-cultured with different viable count of *L. plantarum* G83. All data are shown as mean  $\pm$  SD. Data are analyzed with one-way ANOVA (Tukey's test). Different letters mean  $p < 0.05$ , same letter means  $p > 0.05$

production of cytokines such as IL-6, TNF- $\alpha$ , and IL-1 $\beta$  [45]. It is further proved that IL-10 plays an important role in the negative feedback regulation of inflammatory response by *L. plantarum* G83, and its mechanism of action needs to be further studied. In addition, the NO released in the cell supernatant had the same change trend as IL-10. As an important signal mediator, NO plays a dual role in inflammatory response. It can not only inhibit the activity of microbes inside and outside the cell but also mediate the cytotoxic response and activate T lymphocytes [46, 47].

There is a large variation in protein composition on the surface of different *Lactobacillus* strains. They can be recognized by different receptors on the host cell and activate the immune signal pathway. This may be one of the reasons why different strains have different probiotic profiles [48]. Many studies demonstrated that the *Lactobacillus* spp. regulates immune response by triggering off the TLR2 and TLR4 relative pathways to boost or inhibit pro-inflammatory cytokine release [18–20]. Direct exposure of inactivated *Lactobacillus* spp. to macrophages can activate the TLR2-NF- $\kappa$ B

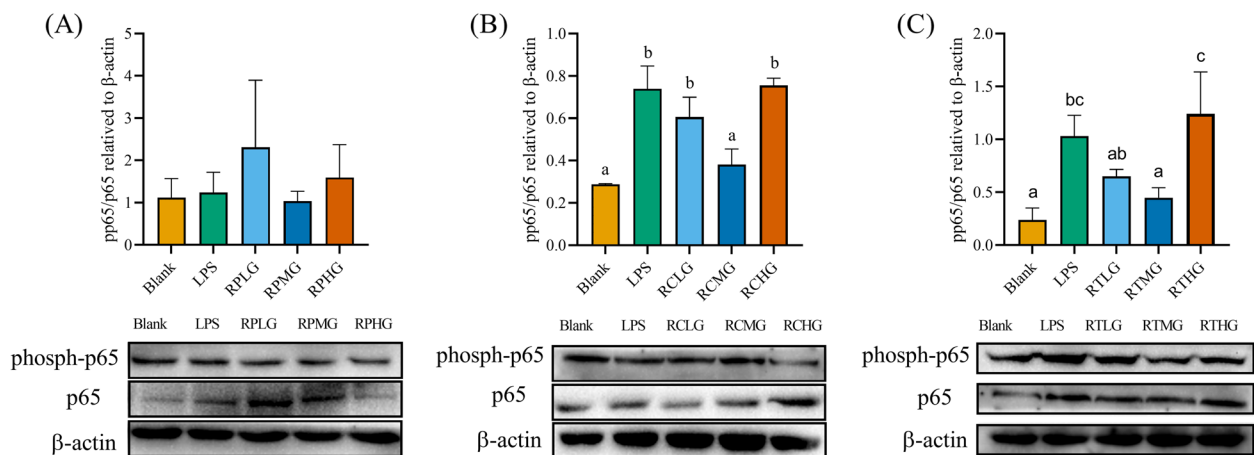


**Fig. 12** Effects of different doses of *L. plantarum* G83 post-treated with LPS-induced RAW264.7 on the inflammation relative gene expression. Inflammation related cytokines genes (IL-1 $\beta$  (A), TNF- $\alpha$  (B), IL-10 (C), IL-6 (D)) and TLRs/NF- $\kappa$ B related genes (TLR2 (E), TLR4 (F), iKK  $\beta$  (G), NF- $\kappa$ B (H) and MyD88 (I)) were determined by qRT-PCR after RAW264.7 post-treated with different viable count of *L. plantarum* G83. All data are shown as mean  $\pm$  SD. Data are analyzed with one-way ANOVA (Tukey's test). Different letters mean  $p < 0.05$ , same letter means  $p > 0.05$

pathway and promote the expression of pro-inflammatory cytokines such as IL-8, TNF- $\alpha$ , IL-12p70, and IL-6 [49]. *L. plantarum* L15 showed to alleviate DSS-induced inflammation and down-regulate the expression of TLR4 and MyD88 genes as well as genes associated with NF- $\kappa$ B signaling pathway [50]. Results of our study showed that genes related to the TLR4/NF- $\kappa$ B signaling pathway were significantly down-regulated after *L. plantarum* G83 intervention. At the same time, the phosphorylation level of NF- $\kappa$ B/p65 was also significantly reduced in our study. However, we didn't

observe any change in TLR2 in any treatment groups. Therefore, we speculated *L. plantarum* G83 may not use TLR2 but TLR4 for signal transduction to interfere with the inflammatory response.

Because of the limitation of giant panda resources, there was little possibility to use panda-derived cells for experiments. Therefore, the widely used intestinal epithelial cell line (Caco-2) and immune cell line (RAW264.7) were used to reveal the mechanism of action of *L. plantarum* G83 in intestinal barrier and immune regulation in vitro [51, 52]. It is well known that probiotics show



**Fig. 13** Effects of *L. plantarum* G83 on NF-κB/p65 protein phosphorylation level in LPS-induced RAW264.7 cells. The phosphorylation level of P65 protein was determined by western blot after RAW264.7 pre-treated (A), co-cultured (B) and post-treated with different viable count of *L. plantarum* G83. The same batch of different treatment samples ran on the same gel and blots closest to the mean abundance cropped from different gels were presented in the figure. All data are shown as mean  $\pm$  SD. Data are analyzed with one-way ANOVA (Tukey's test). Different letters mean  $p < 0.05$ , same letter means  $p > 0.05$

different properties in different hosts and even between different individuals, and different cell lines may have different testing results [53, 54]. Moreover, generally, the results of in vitro study may not be completely consistent with those of in vivo study. In other words, our findings may not all be validated in giant pandas. However, the results of current in vitro study could prove that *L. plantarum* G83 has no toxicity to cells and ability to alleviate inflammatory response. It also provides us with clues for further understanding on its mechanism of interaction with host to enhance tight junction proteins to strengthen the barrier function, and alleviate the inflammatory response induced by LPS in vivo. More in vitro and in vivo testing are needed to verify our current findings.

## Conclusion

In summary, the result from our study demonstrated that *L. plantarum* G83 possessed promotion of intercellular barrier function and improvement of inflammatory response in LPS induced inflammation model in vitro. Therefore, *L. plantarum* G83 is a promising candidate for anti-inflammation treatment in vitro.

## Materials and methods

### *L. plantarum* G83 strain and cell lines

The *L. plantarum* G83 (CCTCC M2016245) was isolated from giant panda feces, and it is available at China Center for Type Culture Collection (CCTCC, Wuhan, CHN). Murine derived macrophages cell line-RAW264.7 (GDC0143) and human colon adenocarcinoma cell

line-Caco-2 cell line (GDC153) were purchased from CCTCC.

### Cell culture and cell viability assay

RAW264.7 cells were cultured in Dulbecco's Modified Eagle Medium (DMEM) (Hyclone, Logan, UT, USA) with 10% fetal bovine serum (FBS) (CellMax, Beijing, CHN), while the Caco-2 cells were cultured in RPMI 1640 instead. Cells were maintained at 37 °C, in a 5% CO<sub>2</sub>, 95% air atmosphere incubator. The cell counting kit-8 (CCK-8) (BOSTER, Wuhan, CHN) was used to measure the viability of cells. Briefly,  $1.0 \times 10^4$  cells were seeded in a 96-wells plate and after overnight incubation, cells were treated with  $1.0 \times 10^4$ ,  $1.0 \times 10^5$ ,  $1.0 \times 10^6$  and  $1.0 \times 10^7$  CFU of *L. plantarum* G83 for 8 h individually. After that, cells were washed with PBS and replaced medium with fresh DMEM, 10  $\mu$ l of CCK-8 solution was added to each well and incubated for another 1 h. The optical density (OD) was measured using Varioskan™ LUX multimode microplate reader (ThermoFisher, Waltham, MA, USA) at 450 nm.

### Effects of *L. plantarum* G83 on LPS-impaired tight junctions in Caco-2 cells

#### Caco-2 cell monolayer

$5.0 \times 10^4$  of Caco-2 cells seeded on the top insert of the transwell plate (24-well plate, polystyrene membrane, 0.4  $\mu$ m pore size). The transmembrane electrical resistance (TEER) between the upper and lower chambers of the transwell is measured using Millicell Res-2 cell resistance meter (MilliporeSigma, Burlington, MA, USA) until the TEER is stable. All Caco-2 cell monolayer cultures

followed the time determined by Millicell Res-2 cell resistance meter mentioned above.

#### **Paracellular permeability and tight junction proteins determination in Caco-2 cell monolayer**

Caco-2 cultured on the top insert of the transwell plate and formed a monolayer as mentioned above. While another batch of Caco-2 cell monolayer was cultured on the 6-well plate. Treatment groups are set as follows:

A), Cells were pre-treated with different concentrations of *L. plantarum* G83 for 8 h, 0 CFU (LPS group),  $1.0 \times 10^6$  CFU (CPLG group),  $1.0 \times 10^7$  CFU (CPMG group),  $1.0 \times 10^8$  CFU (CPHG group), after washing away the *L. plantarum* G83 followed LPS (1  $\mu\text{g}/\text{ml}$ ) stimulation for another 8 h; B), cells were co-cultured with LPS (1  $\mu\text{g}/\text{ml}$ ) and different concentration of *L. plantarum* G83 at the same time for 8 h, 0 CFU+LPS (LPS group),  $1.0 \times 10^6$  CFU+LPS (CCLG group),  $1.0 \times 10^7$  CFU+LPS (CCMG group),  $1.0 \times 10^8$  CFU+LPS (CCHG group); C), after stimulation with LPS (1  $\mu\text{g}/\text{ml}$ ) for 8 h, cells were treated with different concentration of *L. plantarum* G83 for 8 h after washed with PBS for 5 times, 0 CFU (LPS group),  $1.0 \times 10^6$  CFU (CTLG group),  $1.0 \times 10^7$  CFU (CTMG group) and  $1.0 \times 10^8$  CFU (CTHG group). Untreated cells served as a blank (Blank group) added in each group.

For cells cultured on a transwell plate, the insert and bottom well were washed with PBS. 100  $\mu\text{l}$  of 1 mg/mL FITC-D4 in Hank's solution was added in the insert and incubated in the 5%  $\text{CO}_2$  incubator at 37  $^\circ\text{C}$  for 1 h. After incubation, 100  $\mu\text{l}$  solution from the lower compartment of the plate was used to measure fluorescence intensity under 492 nm as excitation wavelength and 520 nm as emission wavelength. All trials were carried out in six repeats.

For cells cultured on 6-well plate, after completing the treatments above, the supernatant was collected for cytokines analysis, and cells were lysed for protein and gene extraction. All trials were carried out in triplicate.

#### **Effects of *L. plantarum* G83 on LPS-induced RAW264.7 cells**

RAW264.7 cells ( $1.0 \times 10^6$ /well) were seeded on a 6-well plate, after overnight incubation, cells were washed 5 times with PBS. After that, treatments were performed as same as that on Caco-2 cells. Treatment groups are set as follows:

A), cells were pre-treated with different concentrations of *L. plantarum* G83 for 8 h, 0 CFU (LPS group),  $1.0 \times 10^6$  CFU (RPLG group),  $1.0 \times 10^7$  CFU (RPMG group) and  $1.0 \times 10^8$  CFU (RPHG group), after washing away the *L. plantarum* G83 followed another 8 h

stimulation by LPS (1  $\mu\text{g}/\text{ml}$ ) was performed; B), Cells were co-cultured with LPS (1  $\mu\text{g}/\text{ml}$ ) and different abundance of *L. plantarum* G83 for 8 h, 0 CFU+LPS (LPS group),  $1.0 \times 10^6$  CFU+LPS (RCLG group),  $1.0 \times 10^7$  CFU+LPS (RCMG group),  $1.0 \times 10^8$  CFU+LPS (RCHG group); C), after stimulation with LPS (1  $\mu\text{g}/\text{ml}$ ) for 8 h, cells were treated with different concentrations of *L. plantarum* G83 for 8 h after washed with PBS for 5 times, 0 CFU (LPS group),  $1.0 \times 10^6$  CFU (RTLG group),  $1.0 \times 10^7$  CFU (RTMG group) and  $1.0 \times 10^8$  CFU (RTHG group). Untreated cells served as a blank (Blank group) added in each group. After completing the treatment above, the supernatant was collected for cytokines analysis, and cells were lysed for protein and gene extraction. All trials were carried out in triplicate.

#### **Effects of *L. plantarum* G83 on macrophage phagocytosis**

$1.0 \times 10^4$  cells were seeded to the 96-well plate, and the grouping and processing methods were as same as described above. Especially, different bacteria viable counts were used to maintain a consistent infection ratio,  $1.0 \times 10^4$  CFU (low-dose group),  $1.0 \times 10^5$  CFU (medium-dose group), and  $1.0 \times 10^6$  CFU (high-dose group) respectively. After the treatment, aspirate the supernatant and wash the cells 5 times with PBS, then 200  $\mu\text{l}$  of 0.05% neutral red staining solution was added to each well. After incubation for 2 h, wash the cell 5 times in PBS and add 200  $\mu\text{l}$  of cold cell lysate (glacial acetic acid: absolute ethanol = 1v:1v) to each well keeping at 4  $^\circ\text{C}$  overnight. Thoroughly mixed lysate and measure OD value at 540 nm.

#### **Enzyme-linked immunosorbent assay (ELISA)**

The concentration of TNF- $\alpha$ , IL-6, IL-10, and NO in the supernatant of RAW264.7 culture supernatant was determined by ELISA kit (MLbio, Shanghai, CHN). While only that of TNF- $\alpha$  and IL-10 in the supernatant of Caco-2 culture was determined. The OD was detected by Varioskan™ LUX multimode microplate reader (Thermosphere, Waltham, MA, USA) at 450 nm.

#### **Western blot**

The protein lysate was obtained from culture cells by culture cell total protein extraction reagent (BOSTER, Wuhan, CHN) with protease inhibitor and phosphatase inhibitor cocktail. Protein concentration was determined by a BCA protein analysis kit (BIOMED, Beijing, CHN). Primary antibodies included rabbit anti- $\beta$ -actin (#20536-1-AP; Proteintech, Wuhan, CHN), rabbit anti-ZO-1 (#21773-1-AP; Proteintech, Wuhan, CHN), rabbit anti-Occludin (#27260-1-AP; Proteintech, Wuhan, CHN), rabbit anti-Claudin 1 (#bs-1428R; Bioss, Beijing,

CHN), rabbit anti-NF- $\kappa$ B P65 (#bs-0465R; Bioss, Beijing, CHN) and rabbit anti-phospho-NF- $\kappa$ B p65 (#3033 T; CST, Danvers, MA USA). Goat anti-rabbit (#bs-0296G; Bioss, Beijing, CHN) was used as secondary antibody.

#### RNA extraction and Real-Time quantitative PCR (RT-qPCR)

Total RNA was isolated from culture cells using TRIzol Reagent (Invitrogen, Carlsbad, CA, USA). The first-strand cDNA was synthesized from total RNA using RevertAid First Strand cDNA Synthesis Kit (ThermoFisher, Waltham, MA, USA). The RT-qPCR was performed using iTaq™ Universal SYBR Green (Bio-Rad, Hercules, CA, USA) on the CFX Connect™ Real-Time PCR Detection System (Bio-Rad, Hercules, CA, USA). The result of relative gene expression was normalized to that of  $\beta$ -actin and evaluated through the  $2^{-\Delta\Delta C_t}$  method.

#### Data analysis

All data were expressed as means with standard error. Statistical analysis was performed by one-way ANOVA in SPSS 19.0. Statistical significance was set at  $p < 0.05$ .

#### Supplementary Information

The online version contains supplementary material available at <https://doi.org/10.1186/s12866-023-02928-4>.

##### Additional file 1.

#### Acknowledgements

We thank faculties not on the authorship for their efforts on this project. The authors gratefully acknowledge the constructive comments from reviewers.

#### Authors' contributions

YZH and DL conceived and designed this experiment. YZH, YZ, YP and AK performed experiments. YZH, DL, XS, YZ, LN and JKL performed data analysis. YZH, DL, DZ, BRS and XN drafted the manuscript. KP, JF, BJ, DZ, JKL, BRS and XN helped to revise the manuscript. DZ and XN supervised all experimental works. All authors read and approved the final manuscript.

#### Funding

The research was supported by funding from the National Natural Science Foundation of China (31970503), Project of Chengdu Giant Panda Breeding Research Foundation (CPF2017-04), and China Scholarship Council (201906910016).

#### Availability of data and materials

All data generated or analyzed during this study are included in this published article and its [Supplementary information files](#).

#### Declarations

#### Ethics approval and consent to participate

Not applicable.

#### Consent for publication

Not applicable.

#### Competing interests

The authors declare no competing interests.

Received: 16 January 2023 Accepted: 3 July 2023

Published online: 06 September 2023

#### References

- Cronin P, Joyce SA, O'Toole PW, O'Connor EM. Dietary fiber modulates the gut microbiota. *Nutrients*. 2021;13(5):1655. <https://doi.org/10.3390/nu13051655>.
- Brewster R, Brewster R, Tamburini FB, Asimwe E, Oduaran O, Hazelhurst S, et al. Surveying gut microbiome research in Africans: toward improved diversity and representation. *Trends Microbiol*. 2019;27(10):824–35. <https://doi.org/10.1016/j.tim.2019.05.006>.
- Ravinder N, Shively CA, Appt SA, Register TC, Michalson KT, Vitolins MZ, et al. Gut microbiome composition in non-human primates consuming a western or Mediterranean diet. *Front Nutr*. 2018;5:28. <https://doi.org/10.3389/fnut.2018.00028>.
- Yao R, Xu L, Hu T, Chen H, Qi D, Gu X, et al. The "wildness" of the giant panda gut microbiome and its relevance to effective translocation. *Global Ecol Conserv*. 2019;18:e00644. <https://doi.org/10.1016/j.gecco.2019.e00644>.
- Baldelli V, Scaldaferrri F, Putignani L, Del Chierico F. The role of enterobacteriaceae in gut microbiota dysbiosis in inflammatory bowel diseases. *Microorganisms*. 2021;9(4):2465. <https://doi.org/10.3390/microorganisms9040697>.
- Jariwala R, Mandal H, Bagchi T. Indigenous lactobacilli strains of food and human sources reverse enteropathogenic *E. coli* o26: H11-induced damage in intestinal epithelial cell lines: effect on redistribution of tight junction proteins. *Microbiology*. 2017;163(9):1263–72. <https://doi.org/10.1099/mic.0.000507>.
- Hartsock A, Nelson WJ. Adherens and tight junctions: structure, function and connections to the actin cytoskeleton. *Biochim Biophys Acta*. 2008;1778(3):660–9. <https://doi.org/10.1016/j.bbame.2007.07.012>.
- Saltzman ET, Palacios T, Thomsen M, Vitetta L. Intestinal microbiome shifts, dysbiosis, inflammation, and non-alcoholic fatty liver disease. *Front Microbiol*. 2018;9: 61. <https://doi.org/10.3389/fmicb.2018.00061>.
- Shin W, Kim HJ. Intestinal barrier dysfunction orchestrates the onset of inflammatory host–microbiome cross-talk in a human gut inflammation-on-a-chip. *Proc Natl Acad Sci USA*. 2018;115(45):E10539–10547. <https://doi.org/10.1073/pnas.1810819115>.
- Zhou Y, Ni X, Duan L, Niu L, Liu Q, Zeng Y, et al. Lactobacillus plantarum BSGP201683 improves the intestinal barrier of giant panda microbiota-associated mouse infected by enterotoxigenic Escherichia coli k88. *Probiotics Antimicrob Proteins*. 2020;13:664–76. <https://doi.org/10.1007/s12602-020-09722-y>.
- Sanders ME, Merenstein DJ, Reid G, Gibson GR, Rastall RA. Probiotics and prebiotics in intestinal health and disease: from biology to the clinic. *Nat Rev Gastroenterol Hepatol*. 2019;16(10):605–16. <https://doi.org/10.1038/s41575-019-0173-3>.
- Eun CS, Kim YS, Han DS, Choi JH, Lee AR, Park YK. Lactobacillus casei prevents impaired barrier function in intestinal epithelial cells. *APMIS*. 2011;119(1):49–56. <https://doi.org/10.1111/j.1600-0463.2010.02691.x>.
- Mujagic Z, De Vos P, Boekschoten MV, Govers C, Pieters HJH, De Wit NJ, et al. The effects of *Lactobacillus plantarum* on small intestinal barrier function and mucosal gene transcription; a randomized double-blind placebo controlled trial. *Sci Rep*. 2017;7(1):1–11. <https://doi.org/10.1038/srep40128>.
- Blackwood BP, Yuan CY, Wood DR, Nicolas JD, Grothaus JS, Hunter CJ. Probiotic lactobacillus species strengthen intestinal barrier function and tight junction integrity in experimental necrotizing enterocolitis. *J Probiotics Health*. 2017;5(1):159–79. <https://doi.org/10.4172/2329-8901.1000159>.
- Yu Q, Wang Z, Yang Q. Lactobacillus amylophilus d14 protects tight junction from enteropathogenic bacteria damage in Caco-2 cells. *J Dairy Sci*. 2012;95(10):5580–7. <https://doi.org/10.3168/jds.2012-5540>.
- Klaenhammer TR, Kleerebezem M, Kopp MV, Rescigno M. The impact of probiotics and prebiotics on the immune system. *Nat Rev Immunol*. 2012;12(10):728–34. <https://doi.org/10.1038/nri3312>.
- Rocha-Ramírez LM, Pérez-Solano RA, Castañón-Alonso SL, Moreno Guerrero SS, Ramírez Pacheco A, García Garibay M, et al. Probiotic lactobacillus strains stimulate the inflammatory response and activate human

- macrophages. *J Immunol Res.* 2017;2017:4607491. <https://doi.org/10.1155/2017/4607491>.
18. Mikulic J, Longet S, Favre L, Benyacoub J, Corthees B. Secretory IGA in complex with *Lactobacillus rhamnosus* potentiates mucosal dendritic cell-mediated Treg cell differentiation via TLR regulatory proteins, RALDH2 and secretion of IL-10 and TGF- $\beta$ . *Cell Mol Immunol.* 2017;14(6):546–56. <https://doi.org/10.1038/cmi.2015.110>.
  19. Wang J, Zhang W, Wang S, Liu H, Zhang D, Wang Y, et al. Swine-derived probiotic *Lactobacillus plantarum* modulates porcine intestinal endogenous host defense peptide synthesis through TLR2/MAPK/AP-1 signaling pathway. *Front Immunol.* 2019;10:2691. <https://doi.org/10.3389/fimmu.2019.02691>.
  20. Lee J, Jung I, Choi JW, Lee CW, Cho S, Choi TG, et al. Micronized and heat-treated *Lactobacillus plantarum* LM1004 stimulates host immune responses via the TLR-2/MAPK/NF- $\kappa$ B signaling pathway in vitro and in vivo. *J Microbiol Biotechnol.* 2019;29(5):704–12. <https://doi.org/10.4014/jmb.1812.12059>.
  21. Wang W, Li Y, Han G, Li A, Kong X. *Lactobacillus fermentum* CECT5716 alleviates the inflammatory response in asthma by regulating TLR2/TLR4 expression. *Front Nutr.* 2022;9:931427. <https://doi.org/10.3389/fnut.2022.931427>.
  22. Yamamoto M, Akira S. Mechanisms of innate immune responses mediated by toll-like receptors. *Clin Appl Immunol Rev.* 2005;5(3):167–83. <https://doi.org/10.1016/j.cair.2005.02.001>.
  23. Lebeer S, Vanderleyden J, De Keersmaecker SC. Genes and molecules of lactobacilli supporting probiotic action. *Microbiol Mol Biol Rev.* 2008;72(4):728–64. <https://doi.org/10.1128/MMBR.00017-08>.
  24. Lachar J, Bajaj JS, editors. Changes in the microbiome in cirrhosis and relationship to complications. Hepatic encephalopathy, spontaneous bacterial peritonitis, and sepsis. *Semin Liver Dis.* 2016;36(4):327–330. <https://doi.org/10.1055/s-0036-1593881>.
  25. Ding S, Yan W, Fang J, Jiang H, Liu G. Potential role of *Lactobacillus plantarum* in colitis induced by dextran sulfate sodium through altering gut microbiota and host metabolism in murine model. *Sci China Life Sci.* 2021;64(11):1906–16. <https://doi.org/10.1007/s11427-020-1835-4>.
  26. Martínez-Cañavate A, Sierra S, Lara-Villoslada F, Romero J, Maldonado J, Boza J, et al. A probiotic dairy product containing *L. gasseri* CECT5714 and *L. coryniformis* CECT5711 induces immunological changes in children suffering from allergy. *Pediatr Allergy Immunol.* 2009;20(6):592–600. <https://doi.org/10.1111/j.1399-3038.2008.00833.x>.
  27. Anderson RC, Cookson AL, McNabb WC, Kelly WJ, Roy NC. *Lactobacillus plantarum* DSM 2648 is a potential probiotic that enhances intestinal barrier function. *FEMS Microbiol Lett.* 2010;309(2):184–92. <https://doi.org/10.1111/j.1574-6968.2010.02038.x>.
  28. Hu J, Chen L, Zheng W, Shi M, Liu L, Xie C, et al. *Lactobacillus frumenti* facilitates intestinal epithelial barrier function maintenance in early-weaned piglets. *Front Microbiol.* 2018;9(1):897–915. <https://doi.org/10.3389/fmicb.2018.00897>.
  29. Vaishnava S, Behrendt CL, Ismail AS, Eckmann L, Hooper LV. Paneth cells directly sense gut commensals and maintain homeostasis at the intestinal host-microbial interface. *Proc Natl Acad Sci USA.* 2008;105(52):20858–63. <https://doi.org/10.1073/pnas.0808723105>.
  30. Muscarello L, Siena BD, Marasco R. *Lactobacillus* cell surface proteins involved in interaction with mucus and extracellular matrix components. *Curr Microbiol.* 2020;77(12):1–11. <https://doi.org/10.1007/s00284-020-02243-5>.
  31. Martin JF, Palomino MM, Cutine AM, Modenutti CP, Porto D, Allievi MC, et al. Exploring lectin-like activity of the s-layer protein of *Lactobacillus acidophilus* ATCC 4356. *Appl Microbiol Biotechnol.* 2019;103(12):4839–57. <https://doi.org/10.1007/s00253-019-09795-y>.
  32. Engevik MA, Ruan W, Esparza M, Fultz R, Shi Z, Engevik KA, et al. Immunomodulation of dendritic cells by *Lactobacillus reuteri* surface components and metabolites. *Physiol Rep.* 2021;9(2):e14719. <https://doi.org/10.14814/phy2.14719>.
  33. Al-Sadi R, Nighot P, Nighot M, Haque M, Rawat M, Ma TY. *Lactobacillus acidophilus* induces a strain-specific and toll-like receptor 2-dependent enhancement of intestinal epithelial tight junction barrier and protection against intestinal inflammation. *Am J Pathol.* 2021;191(5):872–84. <https://doi.org/10.1016/j.ajpath.2021.02.003>.
  34. Bhat AA, Uppada S, Achkar IW, Hashem S, Yadav SK, Shanmugakonar M, et al. Tight junction proteins and signaling pathways in cancer and inflammation: a functional crosstalk. *Front Physiol.* 2019;9:1942. <https://doi.org/10.3389/fphys.2018.01942>.
  35. Resta-Lenert S, Barrett K. Live probiotics protect intestinal epithelial cells from the effects of infection with enteroinvasive *Escherichia coli* (EIEC). *Gut.* 2003;52(7):988–97. <https://doi.org/10.1136/gut.52.7.988>.
  36. Resta-Lenert S, Barrett KE. Probiotics and commensals reverse TNF- $\alpha$ - and IFN- $\gamma$ -induced dysfunction in human intestinal epithelial cells. *Gastroenterology.* 2006;130(3):731–46. <https://doi.org/10.1053/j.gastro.2005.12.015>.
  37. Bhat MI, Sowmya K, Kapila S, Kapila R. Potential probiotic *Lactobacillus rhamnosus* (MTCC-5897) inhibits *Escherichia coli* impaired intestinal barrier function by modulating the host tight junction gene response. *Probiotics Antimicrob Proteins.* 2020;12(3):1149–60. <https://doi.org/10.1007/s12602-019-09608-8>.
  38. Wang J, Ji H, Wang S, Liu H, Zhang W, Zhang D, et al. Probiotic *Lactobacillus plantarum* promotes intestinal barrier function by strengthening the epithelium and modulating gut microbiota. *Front Microbiol.* 2018;9:1953. <https://doi.org/10.3389/fmicb.2018.01953>.
  39. Clayburgh DR, Barrett TA, Tang Y, Meddings JB, Van Eldik LJ, Watterson DM, et al. Epithelial myosin light chain kinase-dependent barrier dysfunction mediates T cell activation-induced diarrhea in vivo. *J Clin Invest.* 2005;115(10):2702–15. <https://doi.org/10.1172/jci24970>.
  40. Hirayama D, Iida T, Nakase H. The phagocytic function of macrophage-enforcing innate immunity and tissue homeostasis. *Int J Mol Sci.* 2018;19(1):92–106. <https://doi.org/10.3390/ijms19010092>.
  41. Wang J, Fang X, Wu T, Liu C, et al. In vitro immunomodulatory effects of acidic exopolysaccharide produced by *Lactobacillus plantarum* JLAU103 on Raw264.7 macrophages. *Int J Biol Macromol.* 2019;156:1308–15. <https://doi.org/10.1016/j.ijbiomac.2019.11.169>.
  42. Jeong M, Kim JH, Yang H, et al. Heat-killed *Lactobacillus plantarum* KCTC 13314BP enhances phagocytic activity and immunomodulatory effects via activation of MAPK and STAT3 pathways. *J Microbiol Biotechnol.* 2019;29(8):1248–54. <https://doi.org/10.4014/jmb.1905.05066>.
  43. Tong W, Chen X, Song X, Chen Y, Jia R, Zou Y, et al. Resveratrol inhibits LPS-induced inflammation through suppressing the signaling cascades of TLR4-NF- $\kappa$ B/MAPKS/IRF3. *Exp Ther Med.* 2020;19(3):1824–34. <https://doi.org/10.3892/etm.2019.8396>.
  44. Ahn JE, Kim H, Chung DK. Lipoteichoic acid isolated from *Lactobacillus plantarum* maintains inflammatory homeostasis through regulation of TH1- and TH2-induced cytokines. *J Microbiol Biotechnol.* 2019;29(1):151–9. <https://doi.org/10.4014/jmb.1809.09001>.
  45. Le X, Zeng H, Bao Z, He Z, Li X. Preliminary study on the mechanism of inflammatory cytokines in vascular endothelial injury of henoch-schönlein purpura. *Guangdong Med J.* 2005;26(4):2. <https://doi.org/10.3969/j.issn.1001-9448.2005.04.044>.
  46. Kim KY, Kim MY, Choi HS, Jin BK, Kim SU, Lee YB. Thrombin induces IL-10 production in microglia as a negative feedback regulator of TNF- $\alpha$  release. *Neuroreport.* 2002;13(6):849–52. <https://doi.org/10.1097/00001756-200205070-00022>.
  47. Curcio MF, Batista WL, Castro ED, Strumillo ST, Janini L. Nitric oxide stimulates a PKC-SRC-AKT signaling axis which increases human immunodeficiency virus type 1 replication in human T lymphocytes. *Nitric Oxide.* 2019;93:78–89. <https://doi.org/10.1016/j.niox.2019.09.004>.
  48. Wang H, ZHANG. Cell surface components of lactobacilli: recent advances on their adherence mechanism of action in the gastrointestinal tract. *Chin J Anim Nutr.* 2011;23(02):179–86. <https://doi.org/10.3969/j.issn.1006-267x.2011.02.001>.
  49. Rocha-Ramírez L, Pérez-Solano R, Castañón-Alonso S, Moreno Guerrero S, Ramírez Pacheco A, García Garibay M, et al. Probiotic lactobacillus strains stimulate the inflammatory response and activate human macrophages. *J Immunol Res.* 2017;2017:4607491. <https://doi.org/10.1155/2017/4607491>.
  50. Yu P, Ke C, Guo J, Zhang X, Li B. *Lactobacillus plantarum* I15 alleviates colitis by inhibiting LPS-mediated NF- $\kappa$ B activation and ameliorates DSS-induced gut microbiota dysbiosis. *Front Immunol.* 2020;11:575173. <https://doi.org/10.3389/fimmu.2020.575173>.
  51. Verhoeckx K, Cotter P, López-Exposito I, Kleiveland C, Lea T, Mackie A, Requena T, Swiatecka D, Wichers H. Cham. Caco-2 cell line. In: The impact of Food Bioactives on Health: in vitro and ex vivo models. London: Springer; 2015. p. 103–11.



52. Xu Y, Jagannath C, Liu XD, Sharafkhaneh A, Kolodziejaska KE, Eissa NT. Toll-like receptor 4 is a sensor for autophagy associated with innate immunity. *Immunity*. 2007;27(1):135–44. <https://doi.org/10.1016/j.immuni.2007.05.022>.
53. Mallott EK, Amato KR. Host specificity of the gut microbiome. *Nat Rev Microbiol*. 2021;19(10):639–53. <https://doi.org/10.1038/s41579-021-00562-3>.
54. Eren AM, Sogin ML, Morrison HG, Vaneis JH, Fisher JC, Newton RJ, McLellan SL. A single genus in the gut microbiome reflects host preference and specificity. *ISME J*. 2015;9(1):90–100. <https://doi.org/10.1038/ismej.2014.97>.

### Publisher's Note

Springer Nature remains neutral with regard to jurisdictional claims in published maps and institutional affiliations.

**Ready to submit your research? Choose BMC and benefit from:**

- fast, convenient online submission
- thorough peer review by experienced researchers in your field
- rapid publication on acceptance
- support for research data, including large and complex data types
- gold Open Access which fosters wider collaboration and increased citations
- maximum visibility for your research: over 100M website views per year

**At BMC, research is always in progress.**

Learn more [biomedcentral.com/submissions](https://biomedcentral.com/submissions)

