

RESEARCH ARTICLE

Open Access

Stimulation of growth of the human gastric pathogen *Helicobacter pylori* by atmospheric level of oxygen under high carbon dioxide tension

Shin Ae Park, Ara Ko and Na Gyong Lee*

Abstract

Background: *Helicobacter pylori* (*Hp*), a human pathogen that is associated with gastritis, peptic ulcer, and gastric cancer, has been considered a microaerophile, but there is no general consensus about its specific O₂ requirements. A clear understanding of *Hp* physiology is needed to elucidate the pathogenic mechanism(s) of *Hp* infection.

Results: We cultured *Hp* under a range of O₂ levels with or without 10% CO₂ and evaluated growth profiles, morphology, intracellular pH, and energy metabolism. We found that, in the presence of 10% CO₂, the normal atmospheric level of O₂ inhibited *Hp* growth at low density but stimulated growth at a higher density. Field emission scanning electron microscopy and fluorescence microscopy of *Hp* cells cultured under 20% O₂ tension revealed live spiral-shaped bacteria with outer membrane vesicles on a rugged cell surface, which became smooth during the stationary phase. Fermentation products including acetate, lactate, and succinate were detected in cell culture media grown under microaerobic conditions, but not under the aerobic condition. CO₂ deprivation for less than 24 h did not markedly change cytoplasmic or periplasmic pH, suggesting that cellular pH homeostasis alone cannot account for the capnophilic nature of *Hp*. Further, CO₂ deprivation significantly increased intracellular levels of ppGpp and ATP but significantly decreased cellular mRNA levels, suggesting induction of the stringent response.

Conclusions: We conclude, unlike previous reports, that *H. pylori* may be a capnophilic aerobe whose growth is promoted by atmospheric oxygen levels in the presence of 10% CO₂. Our data also suggest that buffering of intracellular pH alone cannot account for the CO₂ requirement of *H. pylori* and that CO₂ deprivation initiates the stringent response in *H. pylori*. Our findings may provide new insight into the physiology of this fastidious human pathogen.

Keywords: *Helicobacter pylori* growth, atmospheric oxygen level, carbon dioxide

Background

Oxygen is important for many organisms; because of its high redox potential, it is a common electron acceptor in cellular respiration. However, diverse metabolic reactions generate cell-damaging reactive oxygen species such as superoxide (O₂⁻) and hydrogen peroxide as byproducts. In response, cells have developed oxidative stress defense systems to protect themselves from oxidative damage. Microorganisms are classified into three large categories— aerobic, anaerobic, and microaerophilic—on the

basis of their ability to use oxygen as an electron acceptor during ATP generation. Microaerophiles show optimal growth at 2% to 10% O₂, but cannot survive under the normal atmospheric level of O₂ [1].

Helicobacter pylori (*Hp*) is a gram-negative human pathogen that resides in the mucus layer of the stomach. It affects more than half of the world's population and is often associated with gastritis, peptic ulcer, and gastric cancer [2,3]. Numerous studies have shown that *Hp* uses both aerobic respiration and fermentation pathways. Complete genome sequencing and studies of *Hp* metabolism and physiology indicate that *Hp* uses glucose as its primary energy and carbon source by the

* Correspondence: nglee@sejong.ac.kr

Department of Bioscience and Biotechnology, Sejong University, Seoul 143-747, Republic of Korea

Entner-Doudoroff and pentose phosphate pathways [4-9]. Depending on culture conditions, *Hp* anaerobically produces lactate and acetate from pyruvate or aerobically produces acetate or CO₂ [4,7,10,11]. *Hp* metabolizes pyruvate by the anaerobic mixed acid fermentation pathway, accumulating alanine, lactate, acetate, formate, and succinate [12]. It also uses the tricarboxylic acid cycle, which appears to be a noncyclic, branched pathway characteristic of anaerobic metabolism that produces succinate in the reductive dicarboxylic acid branch and α -ketoglutarate in the oxidative tricarboxylic acid branch [13]. *Hp* constitutively expresses the aerobic respiratory chain with a *ccb3*-type cytochrome c oxidase as the terminal oxidase [14]. Whole genome analysis of two *Hp* strains revealed the presence of genes encoding components of the membrane-embedded F₀ proton channel and the catalytic F₁ complex, suggesting that *Hp* produces a significant portion of its ATP by aerobic respiration [9,15]. In addition, *Hp* uses anaerobic respiration utilizing H₂ as an electron donor [16].

Since its discovery in 1984, *Hp* has been considered a microaerophilic bacterium highly susceptible to environmental O₂ tension [17]. *Hp* is a spiral-shaped bacillus that, when exposed to a high O₂ concentration, converts to a full coccoid form that is viable but nonculturable [18,19]. *Hp* is generally cultured under microaerobic conditions using a GasPak or CO₂ chamber to achieve adequate growth, and its cultivation can be difficult and cumbersome [20]. Therefore, significant efforts have been made to increase the efficiency of *Hp* cultivation [21-23].

There are many hypotheses for the microaerophilic requirements of bacteria: high sensitivity to toxic forms of oxygen present in the culture medium, excessive metabolic generation of toxic forms of oxygen, low respiratory rates, iron deficiency, lack of protective enzymes, unusually oxygen-sensitive cell constituents, and reliance on oxygen-labile substrates (see reference [24] for review). The antioxidant defense system of *Hp* has been studied extensively because of its unique microaerophilic nature and clinical importance. *Hp* has been found to express oxidative stress resistance enzymes including superoxide dismutase (SodB), catalase (KatA), as well as peroxiredoxins, alkyl hydroxide reductases, bacterioferritin co-migratory protein and thiol peroxidase (see reference [25] for review). In addition, *Hp* expresses neutrophil-activating protein (NapA), which protects cells from oxidative stress damage, DNA repair proteins (Nth, MutS, RuvC), an oxidized protein repair system (Msr), and the thioredoxin system (thioredoxin and thioredoxin reductase) [25]. Despite these diverse antioxidant systems, *Hp* remains vulnerable to the toxicity of environmental levels of oxygen. Several

lines of evidence have suggested that *Hp* may not be microaerophilic. *Hp* strains exhibit a range of susceptibility to high O₂ tension, and two strains adapted to aerobic growth have been isolated [26]. In addition, researchers, including our group, routinely culture *Hp* strains in regular incubators supplied with 5% to 10% CO₂ [27-30]. Bury-Moné et al. recently reported that at a high cell density and in the presence of 5% CO₂, *Hp* showed similar growth profiles in liquid cultures under microaerobic and aerobic conditions, suggesting that *Hp* may not be microaerophilic [31].

Despite the clinical importance and extensive studies of *Hp*, many basic aspects of its microaerophilicity remain unclear. To extend our knowledge of its pathogenesis in host environments, we must first elucidate its response to O₂ to characterize its physiology and energy metabolism. In the present study, we assessed the response to O₂ and demonstrated that *Hp* growth is promoted by atmospheric O₂ levels when inoculated at high density under 10% CO₂. Our data also suggest that buffering of intracellular pH alone cannot completely explain the CO₂ requirement of *Hp*. Our finding that there is no need to control O₂ tension for *Hp* cultivation at a high cell density may make it substantially easier for researchers to perform experiments with this fastidious pathogen.

Methods

Hp strains and culture conditions

The *Hp* strain 26695 was purchased from American Type Culture Collection (Manassas, VA, USA) and also provided by Dr. A. van Vliet of Erasmus MC University, The Netherlands. Strain SS1 was provided by Dr. Y. H. Choe of Samsung Medical Center, Seoul, Korea, and strains 1061 and 11638 by Dr. A. van Vliet. *Hp* clinical strains G9 and A16 were isolated from antral biopsy specimens of Korean adolescents with gastritis and iron deficiency anemia, respectively. They were analyzed and published previously [30], and re-analyzed for this study.

After revival from frozen stocks, the bacteria were pre-cultured for 24 to 48 h on Brucella broth (BB; Difco, Sparks, MD, USA) agar plates containing 10% horse serum (Gibco BRL, Life Technologies, Rockville, MD, USA) at 37°C in an incubator under 10% CO₂ or in a microaerobic jar (CampyGen gas packs, Oxoid, Hampshire, England). For experiments, cultured cells were collected from the agar plates, washed, and resuspended in BB liquid medium, and then inoculated to the desired optical density at 600 nm (OD₆₀₀) into BB liquid medium buffered with 10 mM sodium phosphate (pH 6.3) and supplemented with 10% new born calf serum (NBCS). Then, 20-ml aliquots were distributed into 100-ml flasks, which were filled with gas mixtures containing a range of O₂ (0%, 5% or 20%) in the absence or

presence of 10% CO₂. The actual O₂ levels in the culture flasks filled with gas mixtures were 2%, 8%, and 20%, respectively, as determined by Oxygen Indicator XP-3180 (New Cosmos Electric, Osaka, Japan). Bacterial cultures were incubated at 37°C with shaking at 200 rpm.

Determination of bacterial growth profiles

Hp cells collected from agar plates were washed and inoculated into BB-NBCS (OD₆₀₀, 0.1). Then, 20-ml aliquots were inoculated into 100-ml flasks, and cultured under various gas conditions. An aliquot of each culture was taken at 6, 12, 24, 36, 48, and 60 h, and the OD₆₀₀ and pH of the culture media were determined. The flasks were then filled with the appropriate gas mixtures and incubated further. These experiments were repeated without exposure to atmospheric O₂; 15 flasks were inoculated with *Hp* and cultured under various gas conditions. One flask was taken to measure OD₆₀₀ and media pH at each time point.

To determine effect of different gas conditions on cell viability, each culture was serially diluted 10-fold with BB liquid medium, and 100- μ l aliquots were spread on BB agar plates supplemented with 10% horse serum. The plates were incubated at 37°C under 10% CO₂ atmosphere for 3 to 6 days, and the colonies were counted.

Field emission-scanning electron microscopy

Hp cultured in liquid media were harvested by centrifugation, pre-fixed in 2% paraformaldehyde and 2% glutaraldehyde in a 0.1 M phosphate buffer (pH 7.2) for 2 h at 4°C, and then post-fixed in 1% osmium tetroxide at 4°C for 2 h. The specimens were dehydrated with a series of ethanol solutions (30%-100%) and treated with hexamethyldisilazane twice for 15 min. The specimens were mounted on metal stubs, coated with a thin layer platinum under argon using a sputter-coater (SCD 005; BAL-TEC, Bannockburn, IL, USA), and then visualized by field emission-scanning electron microscopy (FE-SEM) (Supra 55VP; Carl Zeiss, Oberkochen, Germany) at the accelerating voltage of 2 kV at the National Instrumentation Center for Environmental Management (NICEM; Seoul, Korea). Images were captured in TIFF format.

Confocal microscopy

To determine membrane integrity, bacterial cells were stained with membrane-permeant and -impermeant fluorescent dyes according to the manufacturer's instructions (Live/Dead BacLight Bacterial Viability Kit; Molecular Probes, Eugene, OR, USA) followed by confocal microscopy. *Hp* cells from BB agar plates were inoculated (OD₆₀₀, 0.01 or 0.1) into BB-NBCS media

and grown under various gas conditions. Aliquots were taken at 12 or 36 h, stained with SYTO 9 and propidium iodide (PI) for 15 min, and washed twice with phosphate buffered saline (PBS). Cells were then spread on slide glasses, covered with mounting medium and cover slips, and visualized by confocal microscopy (Leica TCS SP5; Leica Microsystems GmbH, Wetzlar, Germany). SYTO 9 is a green fluorescent membrane-permeant dye that labels all bacteria by staining nucleic acid, whereas PI is a red fluorescent membrane-impermeant dye that labels only bacteria with damaged membranes.

High performance liquid chromatography analysis of organic acid metabolites

The concentrations of fermentation products in the *Hp* culture media were determined by high performance liquid chromatography (HPLC) using the HP1100 system (Hewlett Packard, Palo Alto, CA, USA) at NICEM. *Hp* cells grown on agar plates were collected, washed, and inoculated into 20 ml of fresh media (OD₆₀₀, 0.1). Cells were cultured under various gas conditions for 36 h, and the culture medium was collected and divided into two aliquots (one of which was spiked with 15 mM pyruvate as internal control for quantification), which were processed simultaneously. The culture medium was extracted twice with phenol/chloroform to remove proteins and then passed through a 0.45- μ m syringe filter. The samples were injected into an ion exchange column (Aminex HPX-87H, 300 \times 7.8 mm; Bio-Rad, Richmond, CA, USA), and eluted at 40°C with 0.01 N H₂SO₄ at a flow rate of 0.5 ml/min. Organic acids were analyzed with a refractive index detector HP1100 (Hewlett Packard). Solutions containing glucose and organic acids including acetate, formate, propionate, lactate, pyruvate, succinate, and butyrate were used as standards. Organic acids were identified by their retention times, and the levels of glucose and organic acids in each sample were determined by their peak areas. Results were normalized against the spiked pyruvate, and the amount of secreted organic acid per mg bacterial protein was calculated.

Fluorimetric analysis of cytoplasmic and periplasmic pH

The cytoplasmic and periplasmic pH of *Hp* cells was determined with fluorescent dyes. Bacterial cells grown on BB agar plates were harvested, washed, and inoculated into 20 ml of fresh BB-NBCS media (OD₆₀₀, 0.05). To measure cytoplasmic pH, the membrane-permeant pH-sensitive fluorescent probe, 2,7-bis-(2-carboxyethyl)-5-carboxyfluorescein acetoxymethyl ester (BCECF-AM; Molecular Probes) was added to the culture media (final concentration, 10 μ M). To measure periplasmic pH, we used 2,7-bis-(2-carboxyethyl)-5-carboxyfluorescein

(BCECF, Molecular Probes), which penetrates the outer membrane but not the inner membrane. The cells were grown at 37°C with shaking at 200 rpm under aerobic conditions in the presence or absence of CO₂ (O₂:CO₂:N₂ = 20%:10%:70% or 20%:0%:80%, v/v/v). An aliquot of each culture was taken at 0.5, 3, 6, 12, 24, 36, and 60 h, and the cells were analyzed with a FACSCalibur flow cytometer (Becton Dickinson, San Jose, CA, USA). Acquisition and analysis of samples was performed with CELLQuest Pro software (Becton Dickinson).

Luciferase assay of intracellular ATP

Hp grown in BB-NBCS liquid media were harvested at mid-log phase, washed, and inoculated into 20 ml of fresh media (OD₆₀₀, 0.3). Rifampicin was added to the culture medium at the final concentration of 300 µg/ml. The flasks were then filled with various gas mixtures and incubated at 37°C for 0.5 or 2 h. Cells were then harvested and washed with 0.1 M Tris·Cl buffer (pH 7.75) containing 2 mM EDTA. The cell pellets were resuspended and lysed by sonication on ice with an ultrasonic processor (VC505; Sonics and Materials, Newton, CT, USA). Lysates were centrifuged at 13,600 × *g* at 4°C for 3 min. For the luciferase assay, 250 µl of the *Hp* lysate (supernatant fraction) was mixed with 25 µl firefly lantern extract (Sigma, St. Louis, MO, USA), and luminescence was determined with the Infinite M200 Microplate Luminescence Reader (TECAN, Männedorf, Switzerland). The ATP content of the bacterial lysate was determined with an ATP standard curve and converted into nanomoles of ATP per mg bacterial protein.

HPLC determination of intracellular nucleotides

Intracellular nucleotide, purine, and pyrimidine levels were determined by HPLC using the method described by Huang et al. with slight modifications [32]. *Hp* grown in BB-NBCS liquid media was harvested at mid-log phase, washed, and inoculated into 20 ml of fresh medium (OD₆₀₀, 0.3). The cells were cultured for 1 h under 20% O₂ tension in the absence or presence of CO₂. Bacterial cells were then harvested, washed with ice-cold PBS, and divided into two aliquots (one of which was spiked with 50 µM dTTP as an internal control for quantification), which were processed simultaneously. The cell pellets were resuspended in 50 µl of 6% trichloroacetic acid, vortexed for 20 seconds, and kept on ice for 10 min. These cell extracts were then centrifuged at 13,600 × *g* at 4°C for 10 min. The supernatants were mixed with 150 µl of 1 M Tris·Cl (pH 7.5) and maintained -70°C. HPLC analysis was performed with the HP1100 system (Hewlett Packard) at the Seoul Center of the Korea Basic Science Institute (Seoul, Korea). Samples (70 µl) were injected into the Vydac column (4.6 ×

250 mm; Agilent, Santa Clara, CA, USA) and eluted at room temperature at a flow rate of 1 ml/min. The mobile phase consisted of a gradient of buffer A [0.1 M KH₂PO₄, 5 mM tetrabutylammonium hydrogen sulfate, 2.5% (v/v) acetonitrile, pH 6.0] and buffer B [0.1 M KH₂PO₄, 5 mM tetrabutylammonium hydrogen sulfate, 25% (v/v) acetonitril, pH5.5]. Nucleotides and bases were detected with a UV detector and identified by retention time relative to the standards. The levels of nucleotides and bases in each sample were determined by comparison with a standard curve. The following were used as standards for analysis: adenine, guanine, cytosine, thymine, uracil, ATP, GTP, CTP, UTP, UMP (Sigma), dATP, dGTP, dCTP, dTTP (Takara Korea, Seoul, Korea), ppGpp, and pppGpp (Santa Cruz Biotechnology, Santa Cruz, CA, USA). Results were normalized using the levels of the spiked dTTP, and the nanomoles of intracellular nucleotides and bases per mg bacterial protein was calculated.

Statistical analysis

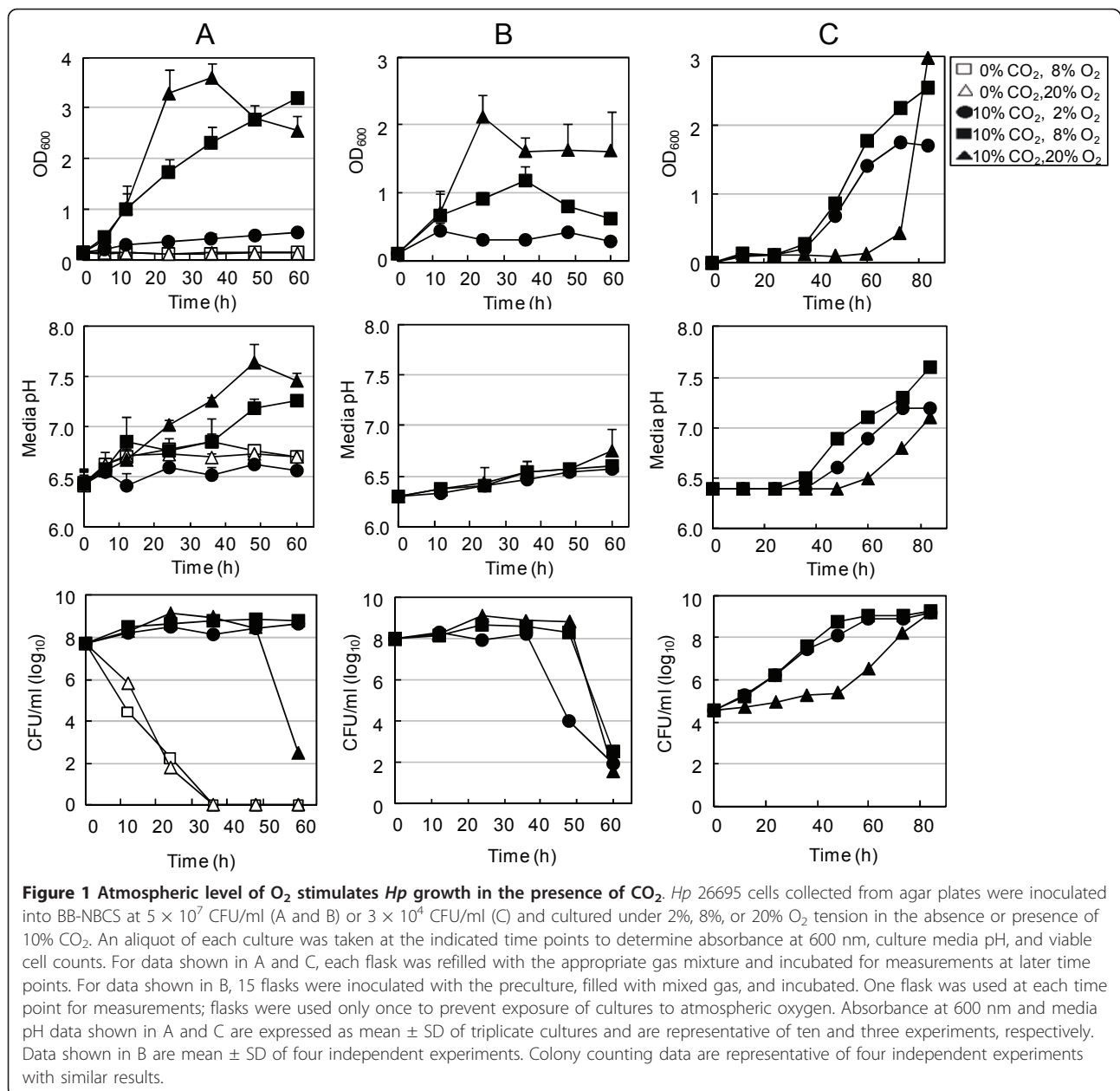
Groups were compared by Student's *t*-test. *P* values less than 0.05 were considered significant. Results are expressed as mean ± standard deviation (SD).

Results

Atmospheric level of O₂ induces *Hp* growth under high CO₂ tension

To evaluate the effects of O₂ on *Hp* growth, we grew *Hp* strain 26695 in liquid medium under various gas conditions and determined growth profiles by measuring OD₆₀₀. Our preliminary studies showed that the culture medium pH rapidly rose as cell density increased, subsequently inhibiting growth as described previously [33]. However, the culture medium pH was lower in cultures exposed to 10% CO₂ than in the absence of CO₂. To eliminate the effect of pH on *Hp* growth, we buffered the BB-NBCS medium for all experiments in the present study with sodium phosphate to pH 6.3, which is the *pK_a* value for the bicarbonate and carbonic acid reaction. Starting cultures used for experiments were prepared in a same way throughout the study as described in Materials and Methods. We observed that more than 99% of cells in the starting cultures were membrane-intact after Live/Dead membrane permeability staining and that more than 80 percent of the cells were viable.

In contrast to previous reports, we observed that *Hp* grew faster and to a higher density under 20% O₂ tension than under 8% O₂ tension in the presence of 10% CO₂ (Figure 1A). Under 20% O₂, growth peaked at 36 h and then declined. Very little growth was detected in the culture grown under 2% O₂ tension, and no growth was detected in the absence of CO₂ regardless of O₂ concentration. The culture medium pH increased in



parallel with bacterial growth, indicating ammonia production by growing bacteria (Figure 1A). Viable cell count analysis also revealed that the number of cells in aerobic cultures was 3-4 times higher than that in microaerobic cultures at 24 h, but rapidly decreased after 48 h. In contrast, a rapid drop in viable cell count was observed in cultures grown without CO₂, and no viable cells were detected at 36 h. In this first experiment, we took measurements from aliquots obtained from the culture flasks at each time point; the flasks were then refilled with the appropriate gas mixtures and incubated further for subsequent analysis. As a result, cultures grown under 2% or 8% O₂ tension were

exposed to atmospheric oxygen during sampling, which may have affected results.

To verify our results, we inoculated 15 flasks with a preculture, filled with the appropriate gas mixtures, and incubated. At each time point, we measured the bacterial growth and culture medium pH of one flask of each gas condition. Flasks were sampled only once to prevent exposure of cultures to atmospheric O₂. The growth profiles were similar to those presented in Figure 1A, but absorbance values were generally lower and culture medium pH increased only modestly (Figure 1B). However, without periodic exposure to atmospheric O₂, *Hp* growth was much lower under 8% O₂ tension. These

results confirmed that 20% O₂ does not kill *Hp* but increases growth compared with 2% or 8% O₂.

Bury-Moné et al. reported that *Hp* lost its microaerophilic properties, demonstrating similar growth profiles under 5% and 21% O₂ tension when inoculated at a high cell density but not at low density [31]. In the present study, we inoculated cells to an OD₆₀₀ of 0.1, corresponding to 5 × 10⁷ CFU/ml. We also inoculated BB-NBCS with a preculture containing 5 × 10⁶ CFU/ml and cultured under 2%, 8%, or 20% O₂ tension in the presence of 10% CO₂, and obtained similar results (data not shown). At 12 h, the bacterial concentration was slightly lower under 20% O₂ tension than under 8% O₂; this was observed at 6 h in the cultures inoculated at higher cell density. We further reduced the inoculum to 3 × 10⁴ CFU/ml, which resulted in prolonged lag periods in all three cultures. In particular, cultures grown under 20% O₂ showed barely detectable growth until 48 h, but subsequently grew exponentially (Figure 1C). In this experiment, we replenished flasks with the appropriate gas mixtures every 12 h; thus, decreased O₂ levels may not be the reason for rapid growth at high density. Gram-stain analysis and viable cell counts showed that this apparent lack of growth was not due to coccoid formation or cell death. Increases in medium pH were consistent with the growth profiles of the cultures. Taken together, these results suggest that high O₂ tension inhibits growth of cultures inoculated at low density but increases growth of cultures inoculated at higher density.

To confirm these results, we compared the growth profiles of other *Hp* strains incubated under 8% and 20% O₂ tension. *Hp* strains SS1 and 1061 also grew more quickly under 20% O₂ tension (data not shown). Because these laboratory strains may have adapted to high O₂ tension after many in vitro passages, we also tested the clinical strains G9 and A16 and obtained similar results (data not shown). Growth of all *Hp* strains tested, other than strain 1061, rapidly declined when the medium pH reached approximately 7.3, demonstrating the high sensitivity of *Hp* to alkaline pH. To verify that the ability of *Hp* cells to grow under 20% O₂ tension is not due to adaptation to atmospheric O₂ tension, we also determined the growth (both low-density and high-density) of strains 26695 and 11638, which had been maintained under only microaerobic conditions, and obtained similar results (data not shown). On the basis of these results, we concluded that atmospheric levels of O₂ do not kill *Hp* but rather promote growth at high cell densities.

Because CO₂ is essential for *Hp* growth, we assessed the ability of bicarbonate to substitute for CO₂ in supporting *Hp* growth. *Hp* cells were cultured in BB-NBCS supplemented without or with sodium bicarbonate (10,

20, or 30 mM) under 20% O₂ in the absence of CO₂. Growth was proportional to bicarbonate concentration, indicating that *Hp* can utilize bicarbonate in place of CO₂ (Figure 2A). Cultures grown with higher bicarbonate levels reached a growth peak at the time point at which medium pH was approximately 7.3. Thus, the early entry of these cultures into the stationary phase appeared to be due to high culture medium pH.

To survive in the highly acidic host environment, *Hp* contains the enzyme urease, which converts urea to ammonia and CO₂ [34-38]. Urea supports *Hp* growth in the absence of CO₂ only at acidic pH levels; the CO₂ generated from urea plays a role in periplasmic and cytoplasmic buffering [39,40]. We tested the possibility that CO₂ generated from urea was sufficient to support the growth of *Hp*. We buffered culture medium (pH 6.3) to prevent high pH from inhibiting *Hp* growth. In the absence of CO₂, urea markedly shortened the lag phase of growth, but combining urea with CO₂ did not yield additive effects on growth (Figure 2B). We also cultured *Hp* in the medium supplemented with NH₄Cl in the absence or presence of CO₂. NH₄Cl supply did not support *Hp* growth in the absence of CO₂ nor shortened the lag period in the presence of CO₂, excluding the possibility that ammonium produced from urea supports *Hp* growth.

Supplementation of the culture medium with oxaloacetate, which is rapidly converted into pyruvate and CO₂, also supported *Hp* growth in the absence of CO₂, but addition of oxaloacetate to cultures incubated under 10% CO₂ did not increase *Hp* growth (data not shown). In contrast, pyruvate supplementation could not substitute for CO₂ (data not shown). Taken together, these data demonstrate the CO₂ requirement of *Hp* for optimal growth and its ability to utilize bicarbonate in place of CO₂.

Lack of CO₂ but not high O₂ tension transforms *Hp* into the coccoid form

Hp has long been known to transform into the coccoid form under unfavorable conditions, including exposure to atmospheric O₂ levels. We examined the morphology of *Hp* grown under various levels of O₂ and CO₂ by field emission-scanning electron microscopy (FE-SEM) (Figure 3). The spiral form of *Hp* cells was observed at 12 h after inoculation, regardless of gas conditions. However, cultures grown under 8% O₂ in the absence of CO₂ also contained a significant number of coccoid *Hp* cells; at 36 h, most of the cells had transformed into U-shaped or coccoid cells. Under 20% O₂ without CO₂, most cells had very long spiral forms (mean length, 4.5 μm) at 12 h, but more than 60% of the cells were U-shaped, rounded, or coccoid at 36 h. These results indicate that high O₂ levels delay *Hp* transformation into

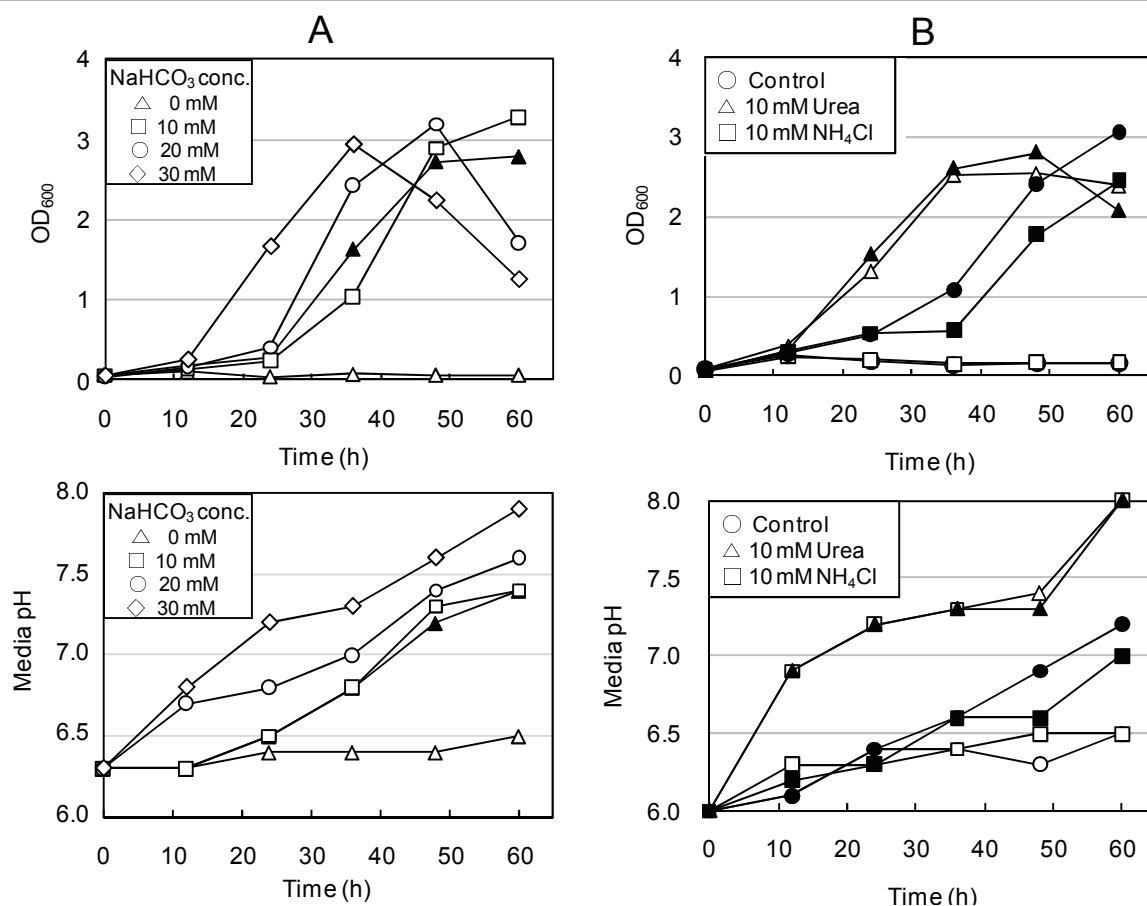


Figure 2 Bicarbonate and urea support *Hp* growth in place of CO₂. *Hp* 26695 cells harvested from agar plates were inoculated into BB-NBCS supplemented with NaHCO₃ (A), urea or NH₄Cl (B) and cultured under 20% O₂ tension in the absence (open symbol) or presence (closed symbol) of 10% CO₂. At each time point, an aliquot of each culture was taken to determine growth and culture medium pH. Data shown in A and B are representative of five and two independent experiments, respectively.

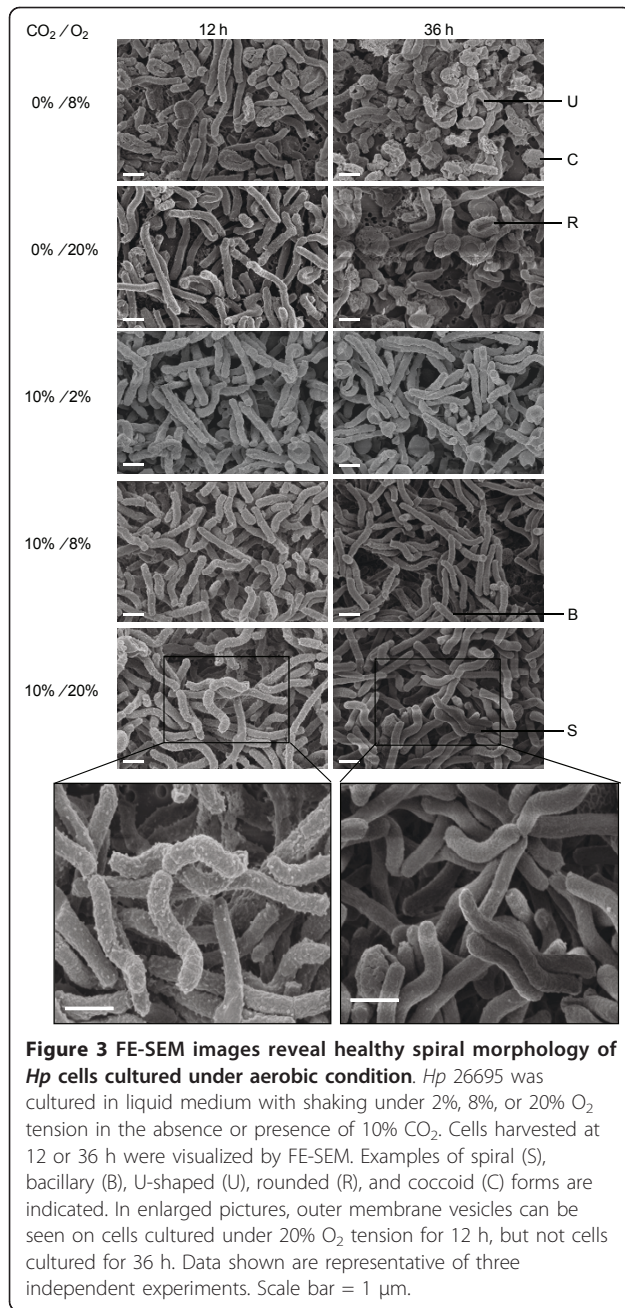
coccoid forms. Under CO₂, most cells were spiral-shaped regardless of O₂ tension at 12 h; however, at 36 h cells grown under 2% O₂ began to convert to coccoid forms, whereas those cultured under 8% or 20% O₂ remained in the unstressed spiral form. We noted numerous outer membrane vesicles (OMVs) at 12 h (mid-log phase) on the rugged surface of bacteria cultured under 8% or 20% O₂ in the presence of 10% CO₂, but OMVs were not observed and the cell surface became smooth at 36 h (stationary phase), suggesting that numerous changes occurred on cell surface structures during phase transition.

Next, we evaluated *Hp* cell membrane integrity under various gas conditions with membrane-permeant and membrane-impermeant fluorescent dyes (Figure 4). Live/dead cell staining with SYTO 9 and propidium iodide (PI) showed that, after 12 h of CO₂ deprivation, many cells lost cytoplasmic membrane integrity under the microaerobic condition. At 36 h, these microaerobic cultures contained only U-shaped, coccoid, and

aggregated forms that had lost membrane integrity (data not shown). In contrast, 20% to 30% of the cells in the culture grown under 20% O₂ without CO₂ retained spiral or bacillary forms with intact membranes at 12 h and may have been viable. This result is consistent with the viable counts of *Hp* in Figure 1A. In the presence of CO₂, most cells remained spiral or rod-shaped with intact membranes regardless of O₂ concentration. Along with FE-SEM findings, these results indicate that high CO₂ tension is required for *Hp* survival and growth, and in the absence of CO₂, aerobic conditions support *Hp* cell survival better than microaerobic conditions.

***Hp* uses fermentation under microaerobic conditions but not under aerobic conditions**

Because our results indicated that *Hp* is not microaerophilic at high cell densities and grows better under aerobic conditions, we assessed *Hp* energy metabolism by measuring metabolites under microaerobic or aerobic conditions. In the initial culture media, the glucose



level was 2.5 mM but became undetectable in the media of cultures grown under 8% or 20% O₂ with 10% CO₂, where bacterial growth was significantly higher, indicating glucose consumption (data not shown). Acetate was the major organic acid product in cultures grown under anaerobic and microaerobic conditions, followed by pyruvate and succinate (Figure 5A). Cultures grown under 20% O₂ in the presence of CO₂ secreted little organic acid into the medium, indicating that *Hp* does not use fermentation to generate ATP under this condition. Pyruvate is a pathway

intermediate and not a typical fermentation product. It was detected only in the media of cultures grown without CO₂ supply regardless of O₂ level, which suggested that pyruvate was released from dead cells grown under CO₂-depleted conditions. For this experiment, we refilled the flasks with the appropriate gas mixture every 12 h to supply CO₂; therefore, exposure of cultures to air may have affected our results. To avoid exposure to atmospheric O₂, we then cultured cells for 36 h without adding gas. The levels of acetate, succinate, and lactate were higher in all three cultures and were inversely associated with the initial O₂ levels (Figure 5B). Oxygen depletion in the closed flasks may account for the higher fermentation rates observed in this experiment, even in the culture grown under 20% O₂ tension. These data suggest that *Hp* uses fermentation under microaerobic conditions but aerobic respiration under aerobic conditions.

Maintenance of intracellular pH is not the sole reason for the CO₂ requirement

Hp is a neutralophile with a bioenergetic profile suited for growth at neutral pH [34]. However, *Hp* resides in a highly acidic environment and has therefore developed systems for acclimation. CO₂ produced by urease is essential for the viability of *Hp* in the acidic environment; the periplasmic α-carbonic anhydrase (CA) converts the CO₂ to bicarbonate, which buffers the periplasm [40]. We hypothesized that the CO₂ requirement for *Hp* survival and growth may be due to reasons other than maintenance of internal pH. We tested this possibility by assessing changes in cytoplasmic and periplasmic pH during the culture of *Hp* cells grown in the absence or presence of CO₂.

Hp 26695 cells were cultured in liquid medium containing the pH-sensitive inner membrane-permeant fluorescent dye BCECF-AM to determine cytoplasmic pH and with the inner membrane-impermeant BCECF free acid to determine periplasmic pH. The cultures were grown under 20% O₂ tension in the absence or presence of 10% CO₂ and then analyzed by flow cytometry (Figure 6). Rapid alkalization of the culture medium was observed in the absence of CO₂, which inhibited growth (data not shown); therefore, we buffered the liquid medium (pH 6.3). Subsequently, the culture medium pH remained below 7.3 until 36 h after inoculation, irrespective of gas conditions (Figure 1A). The absence of CO₂ did not affect cytoplasmic or periplasmic pH until 24 h after inoculation, when the cytoplasmic pH of the cells cultured without CO₂ began to rise, reflecting the cell death observed in the live/dead cell staining (Figure 4). On the basis of these findings, we concluded that CO₂ deprivation does not cause changes in cytoplasmic or periplasmic pH and that the

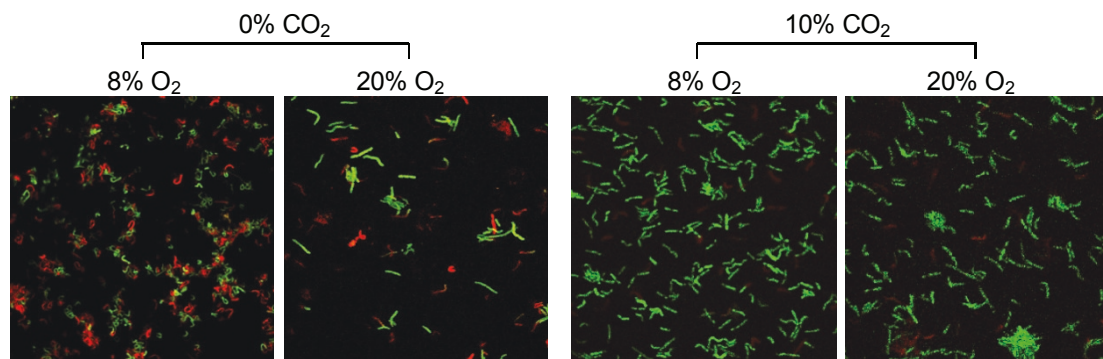


Figure 4 Lack of CO₂ induces coccoid transformation of *HP* cells. *Hp* 26695 was cultured in liquid medium for 12 h under various gas conditions. After staining with membrane-permeant SYTO 9 (green) and membrane-impermeant PI (red), cells were visualized by confocal microscopy. Data shown are representative of five independent experiments.

maintenance of pH homeostasis alone cannot account for the high CO₂ requirement for *Hp* growth.

Accumulation of intracellular ATP in *Hp* cells deprived of CO₂

To determine whether CO₂ deprivation affects the intracellular energy state of *Hp*, we determined intracellular ATP levels of cells grown in the absence or presence of CO₂. *Hp* 26695 cells were cultured under 20% O₂ with or without CO₂ for 0.5 or 2 h, and intracellular ATP levels were determined by luciferase assay (Figure 7). The ATP level of cells deprived of CO₂ was 4 to 8 times higher than that of cells grown under 10% CO₂. In the absence of CO₂, the ATP level of cells grown under the microaerobic condition was higher than that of cells grown under the aerobic condition. O₂ tension also tended to be inversely correlated to the ATP level in the

presence of CO₂. Treatment of cells with rifampicin, which inhibits gene transcription, also increased ATP levels. Intracellular ATP levels appeared inversely associated with growth rate, and therefore its accumulation may be due to cessation of biosynthesis processes.

Lack of CO₂ induces the stringent response in *Hp* cells

The stringent response, which is broadly conserved among bacterial species, enables bacteria to adapt to nutrient stress conditions [41,42]. It is characterized by the rapid accumulation of the alarmones guanosine tetraphosphate (ppGpp) and guanosine pentaphosphate (pppGpp) and the downregulation of nucleic acid and protein synthesis. *Hp* initiates the stringent response upon nutrient and pH downshift [41]. To determine whether CO₂ deprivation induces the stringent response in *Hp*, we assessed intracellular nucleotide pools by

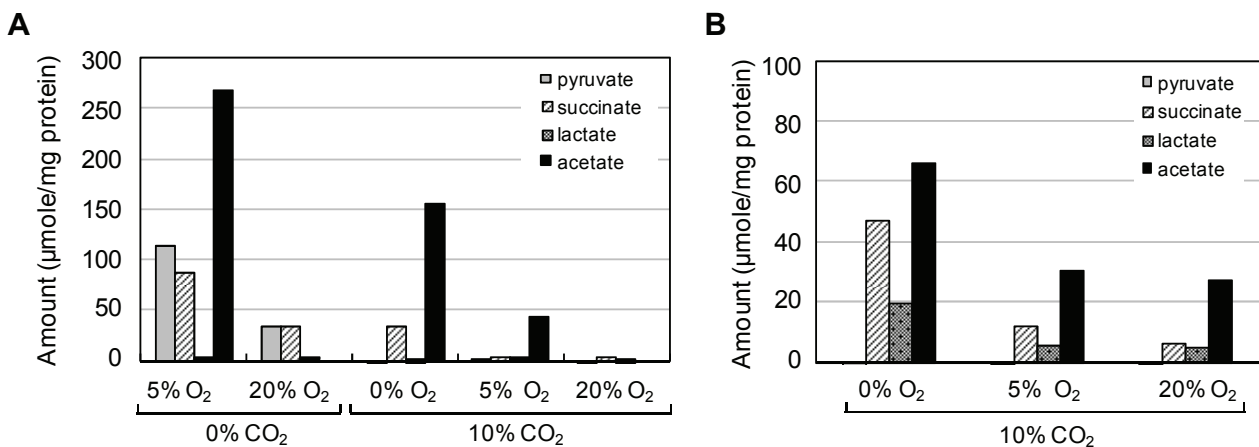


Figure 5 Accumulation of fermentation products in culture media of *Hp* cells grown under low O₂ levels. *Hp* 26695 was cultured in liquid medium for 36 h under various gas conditions with adding the appropriate gas mixture every 12 h (A) or without adding more gas (B). The culture medium was harvested and analyzed for organic acids by HPLC. The organic acid concentrations secreted from bacteria were calculated by subtracting each organic acid level in media control, and converted into μmol secreted per mg bacterial protein. Data shown in A and B are representative of three and two independent experiments, respectively.

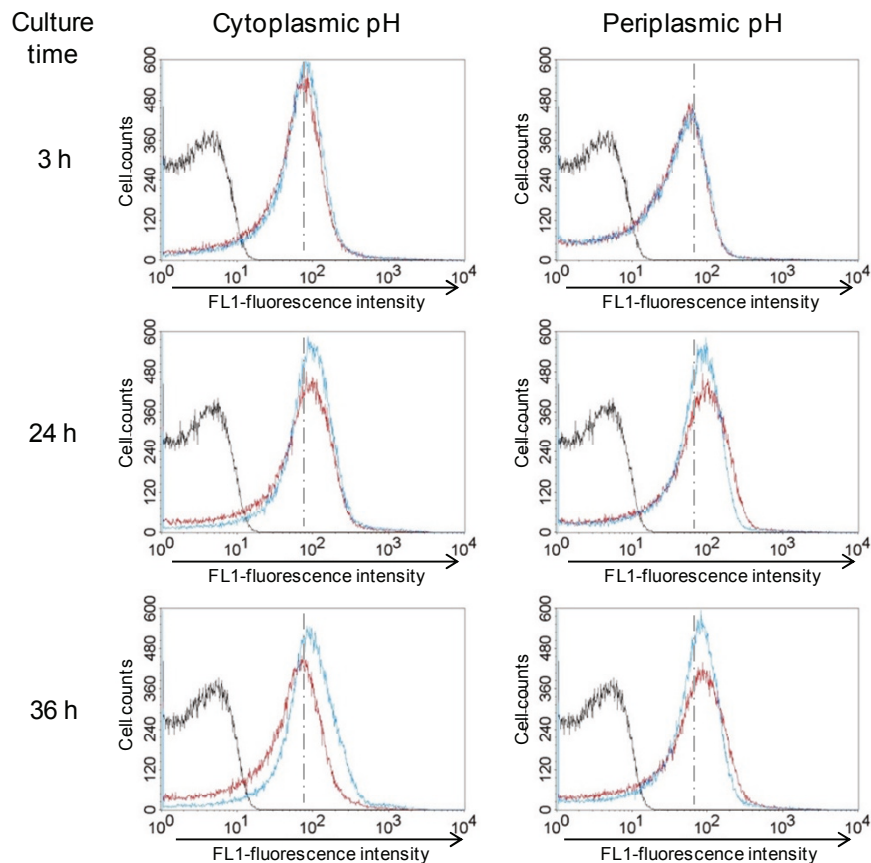


Figure 6 CO₂ deprivation does not cause changes in cytoplasmic or periplasmic pH until 24 h. *Hp* 26695 was inoculated into liquid medium containing the pH-sensitive fluorescent dye BCECF free acid or BCECF-AM, and cultured under 20% O₂ tension in the absence (blue line) or presence (red line) of 10% CO₂. An aliquot of each culture was taken at the indicated time points and analyzed by flow cytometry. Unstained *Hp* cells are shown for comparison (black line). Increase in fluorescence intensity represents higher pH. Data shown are representative of two independent experiments.

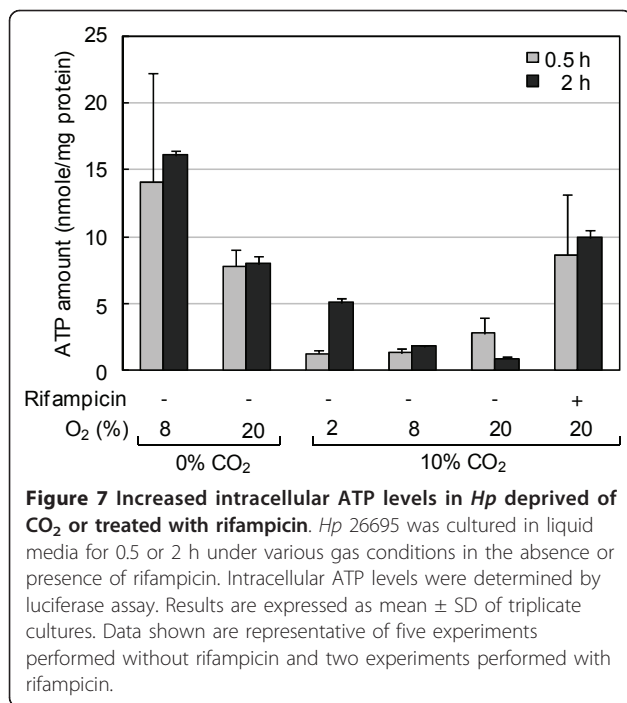
high-performance liquid chromatography (HPLC) (Figure 8). In the presence of 10% CO₂, intracellular ppGpp level was 0.17 nmol per mg bacterial protein, but pppGpp was not detected. Lack of CO₂ significantly increased the ppGpp level, suggesting induction of the stringent response. We noted that uracil was also significantly higher in cells cultured without CO₂. Furthermore, levels of uridine 5'-monophosphate (UMP) and deoxycytidine triphosphate (dCTP), but not cytosine or cytidine-5'-triphosphate (CTP), appeared higher in these cells, although the differences were not significant.

Discussion

Hp has long been considered a microaerophile that requires O₂ for growth but is highly sensitive to atmospheric O₂ levels. In the present study, however, we demonstrate that atmospheric O₂ tension does not kill *Hp* cells but promotes growth of cells when inoculated at high density, and *Hp* is unique in that it absolutely requires high CO₂ tension for optimal growth and long-

term survival. Eliminating the need to remove O₂ makes it considerably easier to culture *Hp* in the laboratory.

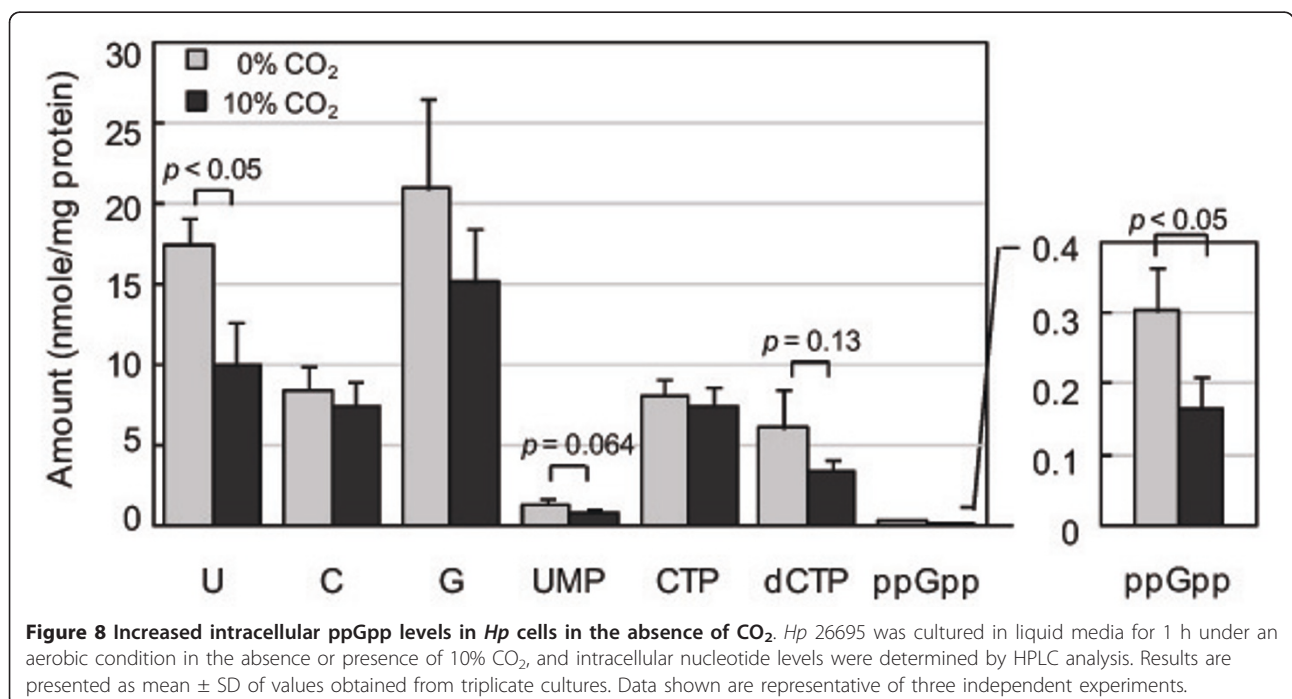
Bury-Moné et al. reported that *Hp* strains showed similar growth profiles under aerobic and microaerobic conditions. However, when cells were inoculated in medium containing 0.2% β -cyclodextrin to low density (10⁷ CFU/ml), growth was not detected under 15% O₂ and 6% CO₂ (generated with CO₂ Gen gas packs) [31]. In contrast, we found that atmospheric O₂ tension did not kill *Hp* cells but did prolong the lag period of cultures inoculated at low cell density (3 × 10⁴ CFU/ml). The conflicting results may have been due to different experimental conditions. We used 10% CO₂ to culture *Hp*, whereas the previous study used 6% CO₂. Culture medium pH may increase faster under lower CO₂ levels than under 10% CO₂, thereby inhibiting bacterial growth, particularly under 20% O₂. Further, because the lag period of low-density cultures is prolonged under 20% O₂, the culture period in the previous study may have been insufficient to detect growth.



Bury-Moné et al. investigated whether growth inhibitory factors played a role in the lack of *Hp* growth under aerobic conditions. In one experiment, *Hp* cells were inoculated at high or low densities in two compartments separated by a membrane that stopped bacteria moving between them but allowed the exchange of

metabolites, chemical compounds, and macromolecules, and cultured under aerobic or microaerobic conditions. In another experiment, a freshly inoculated culture was supplemented with culture medium in which a high-density or low-density culture had grown. Neither experiment revealed effects of inhibitory factors [31].

In the present study, we found that the effect of O₂ on *Hp* growth was dependent on inoculum size: aerobic conditions inhibited growth in low-density cultures but induced growth in high-density cultures. Conversely, under low O₂ tension, low-density cultures grew faster than high-density cultures. In the present study, HPLC analysis of *Hp* metabolites revealed higher levels of acetate, succinate, and lactate at lower O₂ tensions. These results are consistent with previous reports that *Hp* utilizes aerobic respiration or fermentation, depending on environmental O₂ levels, suggesting a possibility that *Hp* is a facultative anaerobe. On the basis of these data, we presumed that it is more efficient for a low-density culture to generate ATP by fermentation rather than by aerobic respiration. In *Escherichia coli*, enzymes involved in the tricarboxylic acid (TCA) cycle are significantly downregulated (2- to 10-fold) and fermentation enzymes are highly upregulated (>10-fold) when glucose is used as a carbon source under microaerobic conditions; the reverse is true under aerobic conditions [43]. Likewise, in *Hp*, fermentation enzyme activity would be expected to be lower under 20% O₂ than under 2% or 8% O₂. In addition, we observed that *Hp* produced more organic acids in the absence of CO₂ than in the presence of CO₂ (Figure 5C), suggesting



that CO₂ is important for efficient aerobic respiration in *Hp* cells, probably for enzyme induction.

CO₂ is involved in a wide range of biological processes, and the addition of CO₂ has been shown to shorten the lag period of bacterial cultures [44]. *Hp* requires high level of CO₂ for its growth and generates a large amount of CO₂ through urease activity. The shaking of cultures during incubation dissipates metabolic CO₂, thus *Hp* growth would be greatly influenced by inoculating cell density, especially under aerobic conditions. We tested this possibility by supplementing a culture inoculated at low density (3×10^4 CFU/ml) with bicarbonate; however, bicarbonate did not increase the growth rate (data not shown).

Another possible explanation for the growth inhibiting effect of O₂ is the bacterial signaling system known as quorum sensing, which monitors cell population density [45]. Bacteria release low molecular-weight autoinducers that accumulate in the environment; at threshold concentrations, these signaling molecules induce the coordinated expression of target genes in the population. *Hp* has been shown to possess a quorum-sensing system [46], and auto-inducer 2 appears to regulate motility and flagella morphogenesis [47]. In *Pseudomonas aeruginosa*, expression of the quorum-sensing regulatory protein LasR is regulated by iron and O₂ [48]. It is not known whether O₂ concentration serves as an environmental signal for monitoring cell density in *Hp*. The precise mechanism for the growth inhibition by high O₂ levels is under investigation.

Numerous studies have been carried out to elucidate *Hp* physiology under oxidative stress, including studies of morphology, gene expression, and protein expression. However, in some of these experiments, *Hp* was cultured under atmospheric O₂ tension without supplemental CO₂ [29,49-51]. Therefore, coccoid transformation and subsequent cellular changes may have resulted, at least in part, from CO₂ deprivation rather than oxidative stress.

A unique feature of *Hp* is its transformation to coccoid form under stress conditions. Coccoid transformation was thought to be a passive conversion that eventually leads to cell death [49]. However, several recent reports have suggested that coccoid transformation is an active process that allows *Hp* to adapt to its environment [52-54]. In the present study, CO₂ deprivation induced coccoid formation, but this morphological transformation was delayed in cells cultured under high O₂ tension, supporting the view that coccoid transformation of *Hp* is not a passive process but an active energy-consuming process.

In this study, we observed that actively growing cells, but not those at a stationary phase, produce OMVs, which are discrete, closed outer membrane blebs produced by gram-negative bacteria, especially pathogenic strains [55]. They are believed to serve as secretory vesicles that transmit virulence factors to host cells. OMVs are released by

actively growing cells, and their maximal production occurs at the end of log phase in *E. coli*, *Vibrio cholerae*, and *Brucella melitensis* [56-58]. *Hp* OMVs are involved in biofilm formation in vitro and deliver VacA cytotoxin to gastric epithelium [59,60]. They induce growth arrest and IL-8 production by gastric epithelial cells, which have been associated with gastritis caused by *Hp* infections [61,62], and also enhances the carcinogenic potential of *Hp* [63]. Taken together, these reports and results obtained in the present study indicate the higher virulence of actively growing *Hp* cells, which are able to damage host cells through toxin delivery.

In the present study, cultivation of *Hp* cells in the absence of CO₂ increased intracellular ppGpp levels, suggesting induction of the stringent response, which induces a global alteration in cellular transcription and indirectly activates genes involved in amino acid biosynthesis [42,64]. Many factors induce the stringent response, but nutrient stress from amino acid starvation has been the best studied. Induction of the stringent response by CO₂ deprivation has also been reported in *Campylobacter jejuni*, a capnophilic microaerophile that is closely related to *Hp* [65].

The bicarbonate concentration of gastric juice is approximately 25 mM [66]. *Hp* generates additional CO₂ via the breakdown of urea, thereby increasing bicarbonate levels. In fact, the gastric CO₂ levels in *Hp*-positive volunteers were significantly higher than those of *Hp*-negative subjects [67]. The affinity for CO₂ may thus be related to its ecological niche, which may have led to adaptation and eventually dependency on high CO₂ concentrations. *Hp* shows chemotactic responses towards high CO₂ concentration in vitro [68]. Elevated levels of CO₂/bicarbonate serve as a signal of the host environment and often increase the expression of diverse virulence factors [69,70]; however, the association between CO₂ and virulence in *Hp* remains to be determined.

Conclusions

In this manuscript, we showed that *H. pylori* may be a capnophilic aerobe whose growth is promoted by atmospheric oxygen levels in the presence of 10% CO₂. Our data also suggest that buffering of intracellular pH alone cannot account for the CO₂ requirement of *H. pylori* and that CO₂ deprivation initiates the stringent response in *H. pylori*. Our findings may provide new insight into the true physiology of this fastidious human pathogen and contribute to understanding of its pathogenic mechanism(s).

Abbreviations

BB: brucella broth; BCECF: 2,7-bis-(2-carboxyethyl)-5-carboxyfluorescein; BCECF-AM: 2,7-bis-(2-carboxyethyl)-5-carboxyfluorescein acetoxymethyl ester; CA: carbonic anhydrase; CFU: colony forming unit; DIG: digoxigenin; FE-SEM:

field emission-scanning electron microscopy; *Hp*: *Helicobacter pylori*; HPLC: high performance liquid chromatography; NBCS: new born calf serum; OMVs: outer membrane vesicles; PBS: phosphate-buffered saline; PI: propidium iodide; ppGpp: guanosine tetraphosphate; pppGpp: guanosine pentaphosphate; rRNA: ribosomal RNA; SD: standard deviation.

Acknowledgements

The authors are grateful to Dr. A. van Vliet of Erasmus MC University, the Netherlands and Dr. Y. H. Choe of Samsung Medical Center, Seoul, Korea for providing *H. pylori* strains. This study was supported by a grant from the Korea Healthcare Technology R&D Project, Ministry of Health & Welfare (No. A080323).

Authors' contributions

SAP participated in the design of the study, carried out the experiments, analyzed the data and drafted the manuscript. AK participated in the EM studies, part of the bacterial growth analysis. NGL conceived of the study and participated in its design, data analysis, coordination and writing of the manuscript. All authors read and approved the final manuscript.

Competing interests

The authors declare that they have no competing interests.

Received: 12 January 2011 Accepted: 11 May 2011

Published: 11 May 2011

References

1. Prescott LM, Harley JP, Klein DA: *Microbiology* New York: McGraw-Hill; 2002.
2. Dunn BE, Cohen H, Blaser MJ: *Helicobacter pylori*. *Clin Microbiol Rev* 1997, **10**:720-741.
3. Kusters JG, van Vliet AH, Kuipers EJ: *Pathogenesis of Helicobacter pylori infection*. *Clin Microbiol Rev* 2006, **19**:449-490.
4. Chalk PA, Roberts AD, Blows WM: *Metabolism of pyruvate and glucose by intact cells of Helicobacter pylori studied by ¹³C NMR spectroscopy*. *Microbiology* 1994, **140**:2085-2092.
5. Mendz GL, Hazell SL: *Evidence for a pentose phosphate pathway in Helicobacter pylori*. *Helicobacter* 1991, **2**:1-12.
6. Mendz GL, Hazell SL: *Glucose phosphorylation in Helicobacter pylori*. *Arch Biochem Biophys* 1993, **300**:522-525.
7. Mendz GL, Hazell SL, Burns BP: *Glucose utilization and lactate production by Helicobacter pylori*. *J Gen Microbiol* 1993, **139**:3023-3028.
8. Mendz GL, Hazell SL, Burns BP: *The Entner-Doudoroff pathway in Helicobacter pylori*. *Arch Biochem Biophys* 1994, **312**:349-356.
9. Tomb JF, White O, Kerlavage AR, Clayton RA, Sutton GG, Fleischmann RD, Ketchum KA, Klenk HP, Gill S, Dougherty BA, Nelson K, Quackenbush J, Zhou L, Kirkness EF, Peterson S, Loftus B, Richardson D, Dodson R, Khalak HG, Glodek A, McKenney K, Fitzgerald LM, Lee N, Adams MD, Hickey EK, Berg DE, Gocayne JD, Utterback TR, Peterson JD, Kelley JM, Cotton MD, Weidman JM, Fujii C, Bowman C, Watthey L, Wallin E, Hayes WS, Borodovsky M, Karp PD, Smith HO, Fraser CM, Venter JC: *The complete genome sequence of the gastric pathogen Helicobacter pylori*. *Nature* 1997, **388**:539-547.
10. Chang HT, Marcellini SW, Davison AA, Chalk PA, Poole RK, Miles RJ: *Kinetics of substrate oxidation by whole cells and cell membranes of Helicobacter pylori*. *FEMS Microbiol Lett* 1995, **129**:33-38.
11. Mendz GL, Hazell SL: *Fumarate catabolism in Helicobacter pylori*. *Biochem Mol Biol Int* 1993, **31**:325-332.
12. Mendz GL, Hazell SL, van Gorkom L: *Pyruvate metabolism in Helicobacter pylori*. *Arch Microbiol* 1994, **162**:187-192.
13. Pitson SM, Mendz GL, Srinivasan S, Hazell SL: *The tricarboxylic acid cycle of Helicobacter pylori*. *Eur J Biochem* 1999, **260**:258-267.
14. Smith MA, Finel M, Korolik V, Mendz GL: *Characteristics of the aerobic respiratory chains of the microaerophiles Campylobacter jejuni and Helicobacter pylori*. *Arch Microbiol* 2000, **174**:1-10.
15. Alm RA, Ling LS, Moir DT, King BL, Brown ED, Doig PC, Smith ER, Noonan B, Guild BC, de Jonge BL, Carmel G, Tummino PJ, Caruso A, Uria-Nickelsen M, Mills DM, Ives C, Gibson R, Merberg D, Mills SD, Jiang Q, Taylor DE, Vovis GF, Trust TJ: *Genomic-sequence comparison of two unrelated isolates of the human gastric pathogen Helicobacter pylori*. *Nature* 1999, **397**:176-180.
16. Olson JW, Maier RJ: *Molecular hydrogen as an energy source for Helicobacter pylori*. *Science* 2002, **298**:1788-1790.
17. Marshall BJ, Warren JR: *Unidentified curved bacilli in the stomach of patients with gastritis and peptic ulceration*. *Lancet* 1984, **1**:1311-1315.
18. Donelli G, Matarrese P, Fiorentini C, Dainelli B, Taraborelli T, Di Campi E, Di Bartolomeo S, Cellini L: *The effect of oxygen on the growth and cell morphology of Helicobacter pylori*. *FEMS Microbiol Lett* 1998, **168**:9-15.
19. Tominaga K, Hamasaki N, Watanabe T, Uchida T, Fujiwara Y, Takaishi O, Higuchi K, Arakawa T, Ishii E, Kobayashi K, Yano I, Kuroki T: *Effect of culture conditions on morphological changes of Helicobacter pylori*. *J Gastroenterol* 1999, **Suppl 11**: 28-31.
20. van Horn K, Tóth C: *Evaluation of the AnaeroPack Campylo system for growth of microaerophilic bacteria*. *J Clin Microbiol* 1999, **37**:2376-2377.
21. Henriksen TH, Lia A, Schøyen R, Thoresen T, Berstad A: *Assessment of optimal atmospheric conditions for growth of Helicobacter pylori*. *Eur J Clin Microbiol Infect Dis* 2000, **19**:718-720.
22. Sainsus N, Cattori V, Lepadatu C, Hofmann-Lehmann R: *Liquid culture medium for the rapid cultivation of Helicobacter pylori from biopsy specimens*. *Eur J Clin Microbiol Infect Dis* 2008, **27**:1209-1217.
23. Sasidharan S, Uyub AM: *Development and evaluation of a new growth medium for Helicobacter pylori*. *FEMS Immunol Med Microbiol* 2009, **56**:94-97.
24. Krieg NR, Hoffman PS: *Microaerophily and oxygen toxicity*. *Ann Rev Microbiol* 1986, **40**:107-130.
25. Wang G, Alamuri P, Maier RJ: *The diverse antioxidant systems of Helicobacter pylori*. *Mol Microbiol* 2006, **61**:847-860.
26. Tompkins DS, Dave J, Mapstone MP: *Adaptation of Helicobacter pylori to aerobic growth*. *Eur J Clin Microbiol Infect Dis* 1994, **13**:409-412.
27. Lee JH, Choe YH, Choi YO: *The expression of iron-repressible outer membrane proteins in Helicobacter pylori and its association with iron deficiency anemia*. *Helicobacter* 2009, **14**:36-39.
28. Mendz GL, Meek DJ, Hazell SL: *Characterization of fumarate transport in Helicobacter pylori*. *J Membr Biol* 1998, **165**:65-76.
29. Mouery K, Rader BA, Gaynor EC, Guillemin K: *The stringent response is required for Helicobacter pylori survival of stationary phase, exposure to acid, and aerobic shock*. *J Bacteriol* 2006, **188**:5494-5500.
30. Park SA, Lee HW, Hong MH, Choi YW, Choe YH, Ahn BY, Cho YJ, Kim DS, Lee NG: *Comparative proteomic analysis of Helicobacter pylori strains associated with iron deficiency anemia*. *Proteomics* 2006, **6**:1319-1328.
31. Bury-Moné S, Kaakoush NO, Asencio C, Mégraud F, Thibonnier M, de Reuse H, Mendz GL: *Helicobacter pylori a true microaerophile?* *Helicobacter* 2006, **11**:296-303.
32. Huang D, Zhang Y, Chen X: *Analysis of intracellular nucleoside triphosphate levels in normal and tumor cell lines by high-performance liquid chromatography*. *J Chromatogr B Analyt Technol Biomed Life Sci* 2003, **784**:101-109.
33. Sjöström JE, Larsson H: *Factors affecting growth and antibiotic susceptibility of Helicobacter pylori: effect of pH and urea on the survival of a wild-type strain and a urease-deficient mutant*. *J Med Microbiol* 1996, **44**:425-433.
34. Meyer-Rosberg K, Scott DR, Rex D, Melchers K, Sachs G: *The effect of environmental pH on the proton motive force of Helicobacter pylori*. *Gastroenterology* 1996, **111**:886-900.
35. Sachs G, Kraut JA, Wen Y, Feng J, Scott DR: *Urea transport in bacteria: acid acclimation by gastric Helicobacter spp.* *J Membr Biol* 2006, **212**:71-82.
36. Sachs G, Weeks DL, Wen Y, Marcus EA, Scott DR, Melchers K: *Acid acclimation by Helicobacter pylori*. *Physiology (Bethesda)* 2005, **20**:429-438.
37. Scott DR, Marcus EA, Wen Y, Singh S, Feng J, Sachs G: *Cytoplasmic histidine kinase (HP0244)-regulated assembly of urease with Urel, a channel for urea and its metabolites, CO₂, NH₃, and NH₄⁺, is necessary for acid survival of Helicobacter pylori*. *J Bacteriol* 2010, **192**:94-103.
38. Weeks DL, Eskandari S, Scott DR, Sachs G: *A H⁺-gated urea channel: the link between Helicobacter pylori urease and gastric colonization*. *Science* 2000, **287**:482-485.
39. Bury-Moné S, Mendz GL, Ball GE, Thibonnier M, Stingl K, Ecobichon C, Avé P, Huerre M, Labigne A, Thiberge JM, de Reuse H: *Roles of alpha and beta carbonic anhydrases of Helicobacter pylori in the urease-dependent response to acidity and in colonization of the murine gastric mucosa*. *Infect Immun* 2008, **76**:497-509.

40. Marcus EA, Moshfegh AP, Sachs G, Scott DR: **The periplasmic alpha-carbonic anhydrase activity of *Helicobacter pylori* is essential for acid acclimation.** *J Bacteriol* 2005, **187**:729-738.
41. Wells DH, Gaynor EC: ***Helicobacter pylori* initiates the stringent response upon nutrient and pH downshift.** *J Bacteriol* 2006, **188**:3726-3729.
42. Chatterji D, Ojha AK: **Revisiting the stringent response, ppGpp and starvation signaling.** *Curr Opin Microbiol* 2001, **4**:160-165.
43. Peng L, Shimizu K: **Global metabolic regulation analysis for *Escherichia coli* K12 based on protein expression by 2-dimensional electrophoresis and enzyme activity measurement.** *Appl Microbiol Biotechnol* 2003, **61**:163-178.
44. Repaske R, Clayton MA: **Control of *Escherichia coli* growth by CO₂.** *J Bacteriol* 1978, **135**:1162-1164.
45. Miller MB, Bassler BL: **Quorum sensing in bacteria.** *Annu Rev Microbiol* 2001, **55**:165-199.
46. Joyce EA, Bassler BL, Wright A: **Evidence for a signaling system in *Helicobacter pylori*: detection of a luxS-encoded autoinducer.** *J Bacteriol* 2000, **182**:3638-3643.
47. Rader BA, Campagna SR, Semmelhack MF, Bassler BL, Guillemin K: **The quorum-sensing molecule autoinducer 2 regulates motility and flagellar morphogenesis in *Helicobacter pylori*.** *J Bacteriol* 2007, **189**:6109-6117.
48. Kim EJ, Wang W, Deckwer WD, Zeng AP: **Expression of the quorum-sensing regulatory protein LasR is strongly affected by iron and oxygen concentrations in cultures of *Pseudomonas aeruginosa* irrespective of cell density.** *Microbiology* 2005, **151**:1127-1138.
49. Kusters JG, Gerrits MM, van Strijp JA, Vandembroucke-Grauls CM: **Coccioid forms of *Helicobacter pylori* are the morphologic manifestation of cell death.** *Infect Immun* 1997, **65**:3672-3679.
50. Mizoguchi H, Fujioka T, Kishi K, Nishizono A, Kodama R, Nasu M: **Diversity in protein synthesis and viability of *Helicobacter pylori* coccioid forms in response to various stimuli.** *Infect Immun* 1998, **66**:5555-5560.
51. Zeng H, Guo G, Mao XH, Tong WD, Zou QM: **Proteomic insights into *Helicobacter pylori* coccioid forms under oxidative stress.** *Curr Microbiol* 2008, **57**:281-286.
52. Azevedo NF, Almeida C, Cerqueira L, Dias S, Keevil CW, Vieira MJ: **Coccioid form of *Helicobacter pylori* as a morphological manifestation of cell adaptation to the environment.** *Appl Environ Microbiol* 2007, **73**:3423-3427.
53. Saito N, Konishi K, Sato F, Kato M, Takeda H, Sugiyama T, Asaka M: **Plural transformation-processes from spiral to coccioid *Helicobacter pylori* and its viability.** *J Infect* 2003, **46**:49-55.
54. Sato F, Saito N, Konishi K, Shoji E, Kato M, Takeda H, Sugiyama T, Asaka M: **Ultrastructural observation of *Helicobacter pylori* in glucose-supplemented culture media.** *J Med Microbiol* 2003, **52**:675-679.
55. Kuehn MJ, Kesty NC: **Bacterial outer membrane vesicles and the host-pathogen interaction.** *Genes Dev* 2005, **19**:2645-2655.
56. Chatterjee SN, Das J: **Electron microscopic observations on the excretion of cell-wall material by *Vibrio cholerae*.** *J Gen Microbiol* 1967, **49**:1-11.
57. Gamazo C, Moriyón L: **Release of outer membrane fragments by exponentially growing *Brucella melitensis* cells.** *Infect Immun* 1987, **55**:609-615.
58. Hoekstra D, van der Laan JW, de Leij L, Witholt B: **Release of outer membrane fragments from normally growing *Escherichia coli*.** *Biochim Biophys Acta* 1976, **455**:889-899.
59. Yonezawa H, Osaki T, Kurata S, Fukuda M, Kawakami H, Ochiai K, Hanawa T, Kamiya S: **Outer membrane vesicles of *Helicobacter pylori* TK1402 are involved in biofilm formation.** *BMC Microbiol* 2009, **19**:197-209.
60. Fiocca R, Necchi V, Sommi P, Ricci V, Telford J, Cover TL, Solcia E: **Release of *Helicobacter pylori* vacuolating cytotoxin by both a specific secretion pathway and budding of outer membrane vesicles. Uptake of released toxin and vesicles by gastric epithelium.** *J Pathol* 1999, **188**:220-226.
61. Ismail S, Hampton MB, Keenan JI: ***Helicobacter pylori* outer membrane vesicles modulate proliferation and interleukin-8 production by gastric epithelial cells.** *Infect Immun* 2003, **71**:5670-5675.
62. Keenan J, Day T, Neal S, Cook B, Perez-Perez G, Allardyce R, Bagshaw P: **A role for the bacterial outer membrane in the pathogenesis of *Helicobacter pylori* infection.** *FEMS Microbiol Lett* 2000, **182**:259-264.
63. Chitcholtan K, Hampton MB, Keenan JI: **Outer membrane vesicles enhance the carcinogenic potential of *Helicobacter pylori*.** *Carcinogenesis* 2008, **29**:2400-2405.
64. Srivatsan A, Wang JD: **Control of bacterial transcription, translation and replication by (p)ppGpp.** *Curr Opin Microbiol* 2008, **11**:100-105.
65. Gaynor EC, Wells DH, MacKichan JK, Falkow S: **The *Campylobacter jejuni* stringent response controls specific stress survival and virulence-associated phenotypes.** *Mol Microbiol* 2005, **56**:8-27.
66. Casey JR: **Why bicarbonate?** *Biochem Cell Biol* 2006, **84**:930-939.
67. Leodolter A, Glasbrenner B, Wiedeck H, Eberhardt H, Malfertheiner P, Brinkmann A: **Influence of *Helicobacter pylori* infection and omeprazole treatment on gastric regional CO₂.** *Digestion* 2003, **67**:179-185.
68. Mizote T, Yoshiyama H, Nakazawa T: **Ureaase-independent chemotactic responses of *Helicobacter pylori* to urea, urease inhibitors, and sodium bicarbonate.** *Infect Immun* 1997, **65**:1519-1521.
69. Abuaita BH, Withey JH: **Bicarbonate Induces *Vibrio cholerae* virulence gene expression by enhancing ToxT activity.** *Infect Immun* 2009, **77**:4111-4120.
70. Yang J, Hart E, Tauschek M, Price GD, Hartland EL, Strugnell RA, Robins-Browne RM: **Bicarbonate-mediated transcriptional activation of divergent operons by the virulence regulatory protein, RegA, from *Citrobacter rodentium*.** *Mol Microbiol* 2008, **68**:314-327.

doi:10.1186/1471-2180-11-96

Cite this article as: Park et al.: Stimulation of growth of the human gastric pathogen *Helicobacter pylori* by atmospheric level of oxygen under high carbon dioxide tension. *BMC Microbiology* 2011 **11**:96.

Submit your next manuscript to BioMed Central and take full advantage of:

- Convenient online submission
- Thorough peer review
- No space constraints or color figure charges
- Immediate publication on acceptance
- Inclusion in PubMed, CAS, Scopus and Google Scholar
- Research which is freely available for redistribution

Submit your manuscript at
www.biomedcentral.com/submit

